

VIRIDIAN  
SITE PLAN KEY

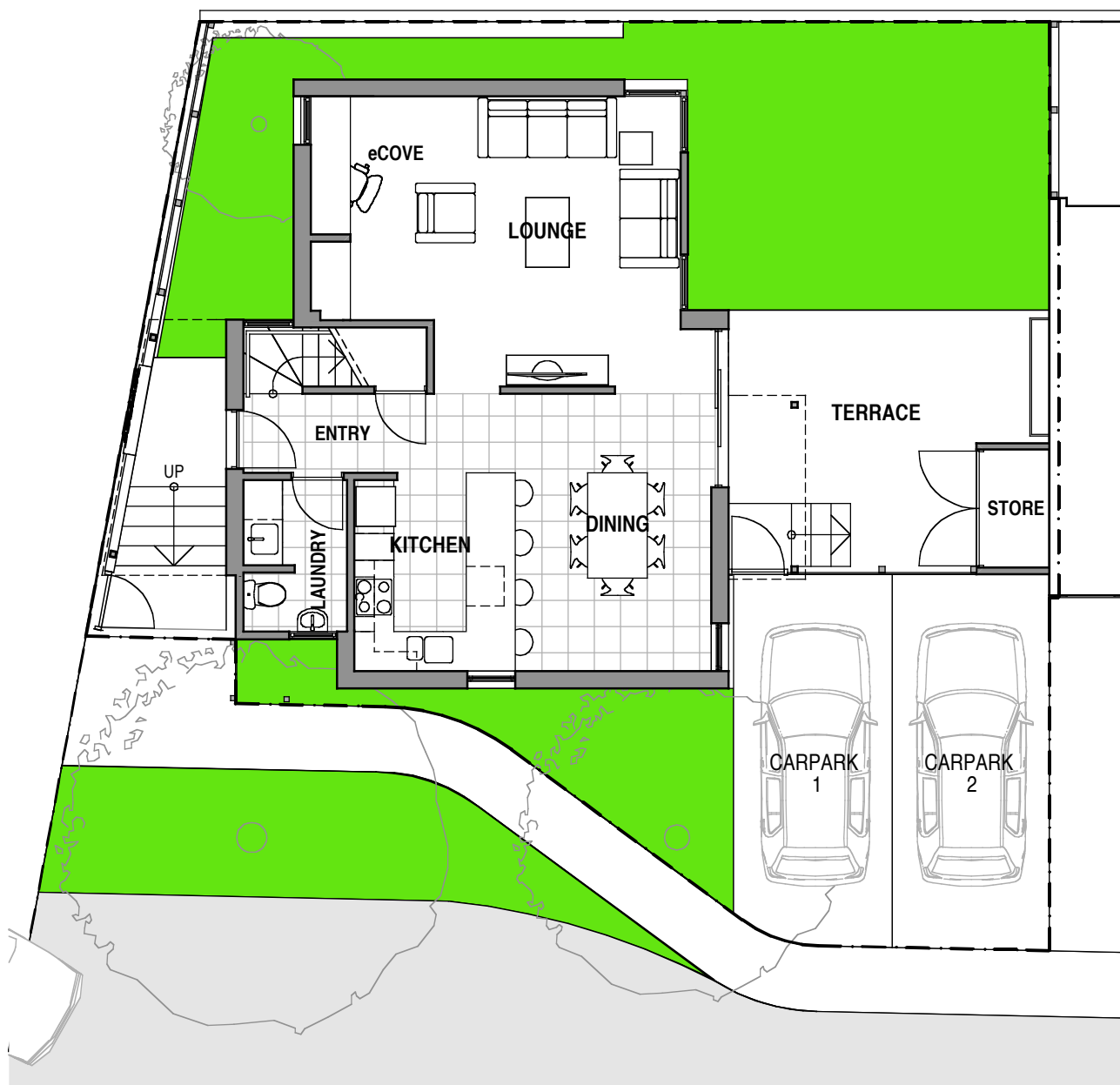
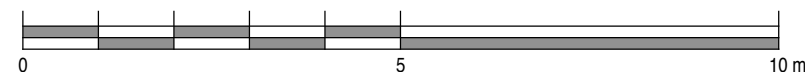
VIRIDIAN  
**HOUSE 01**  
TYPE 01

		AREAS	
BEDROOMS:	3	INTERNAL:	110.4 m <sup>2</sup>
BATHROOMS:	2	TERRACE:	17.3 m <sup>2</sup>
GUEST WC:	1	DECK:	3.3 m <sup>2</sup>
PARKING SPACES:	2	EXT. STORE:	1.8 m <sup>2</sup>
CARPARK No's:	1 & 2	LAND AREA:	166.3 m <sup>2</sup>

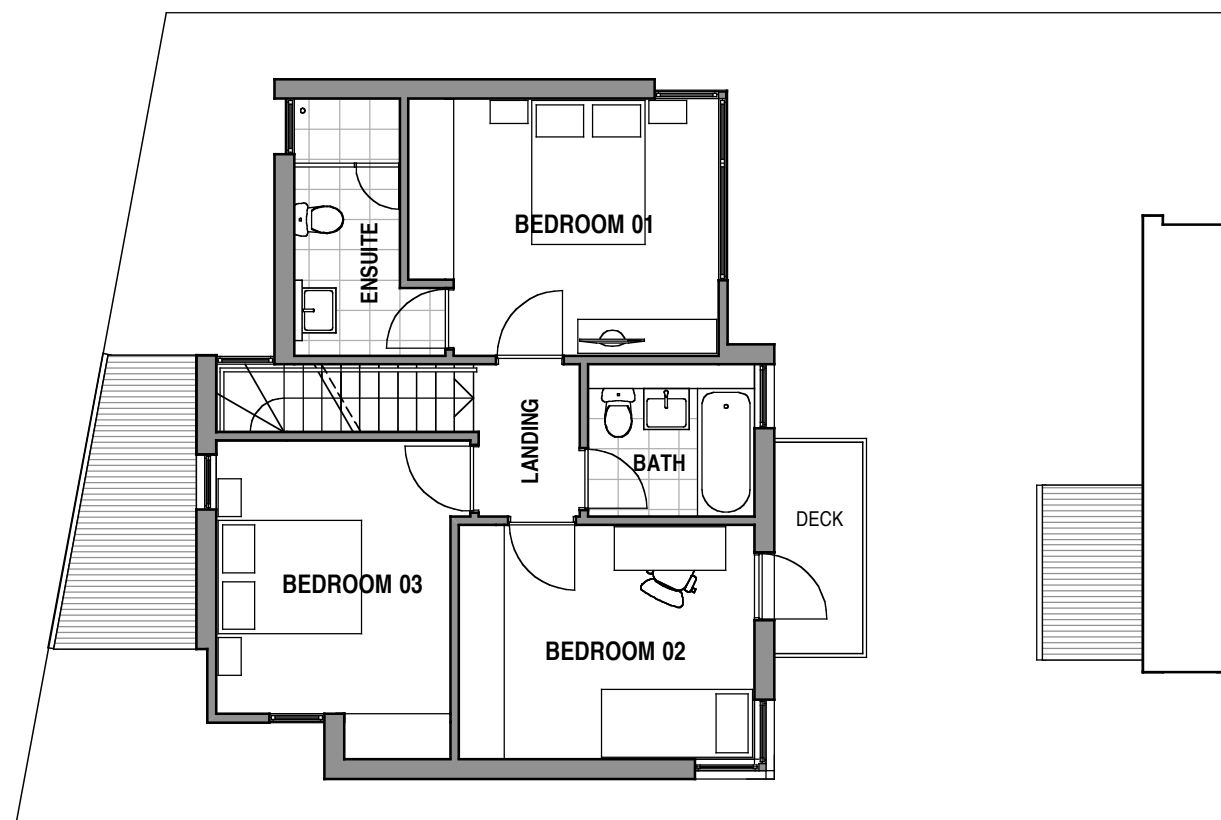
NOTE:

PLANS & DETAILS MAY BE SUBJECT TO VARIATIONS. AREAS ARE APPROXIMATE ONLY.

SCALE

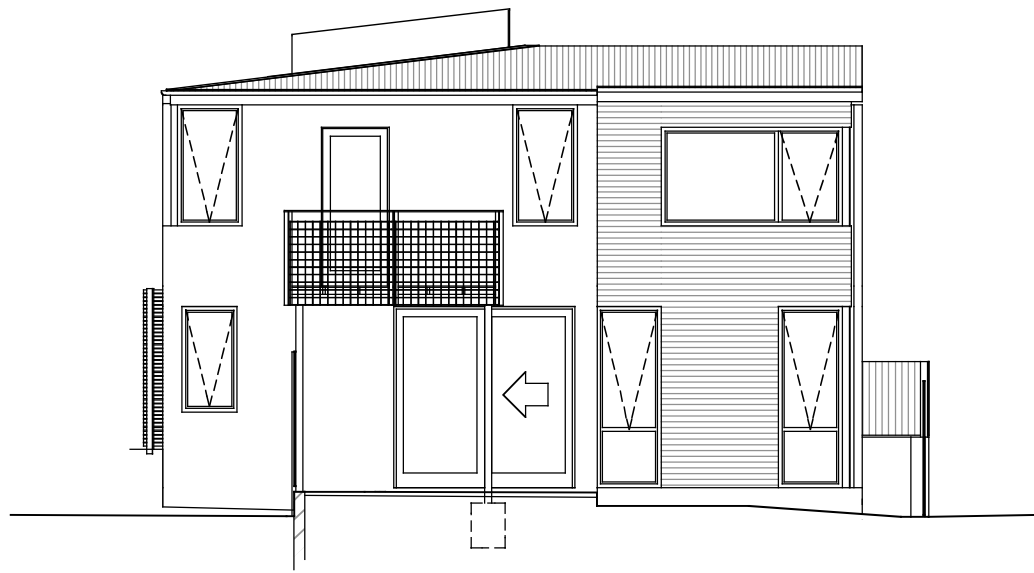


VIRIDIAN - HOUSE 01  
GROUND FLOOR PLAN

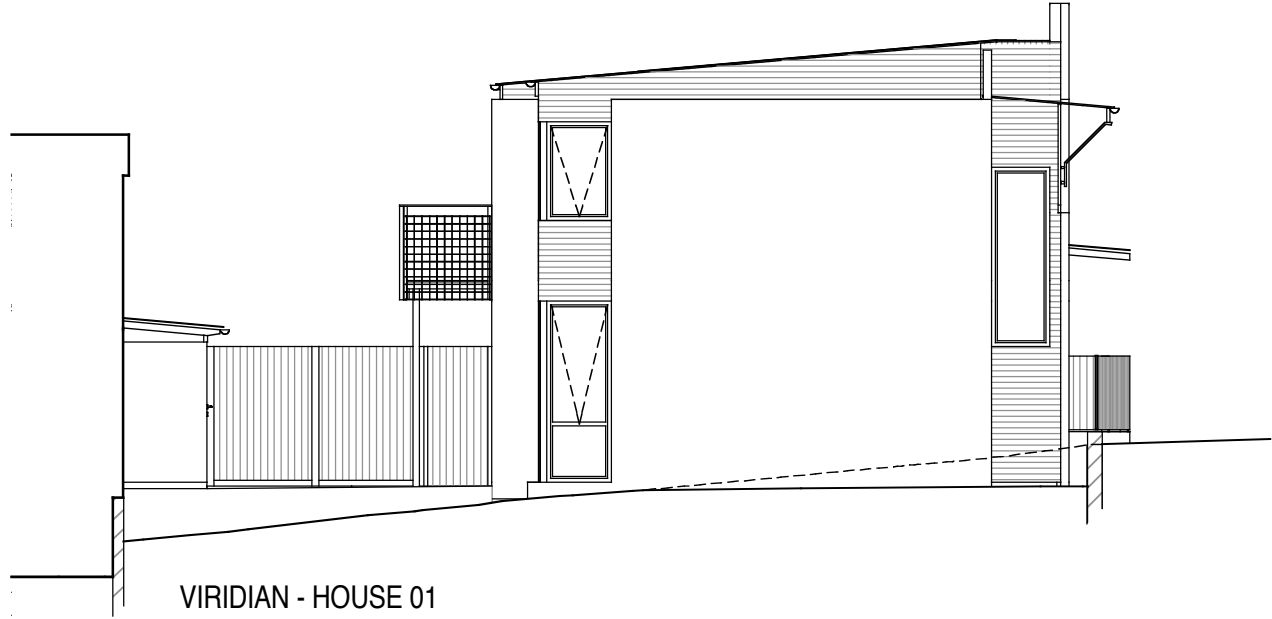


VIRIDIAN - HOUSE 01  
FIRST FLOOR PLAN

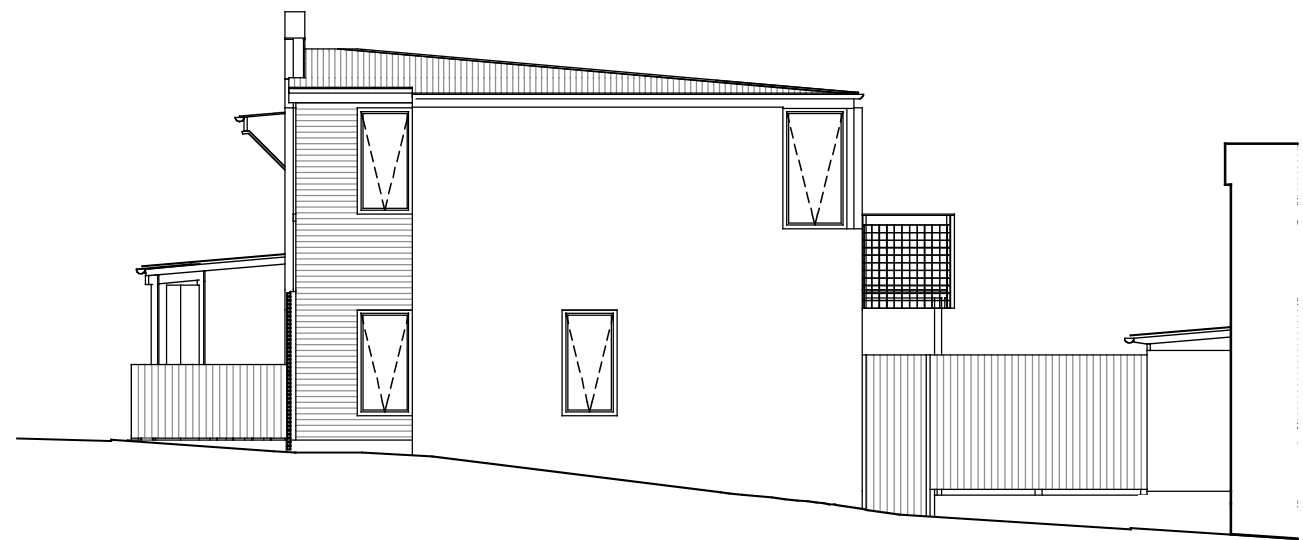
PROJECT HOUSING DEVELOPMENT 301 MURRAY STREET - HOBART		DRAWING TITLE HOUSE TITLES SETOUT HOUSE 01 PLANS	
<small>82 Warwick Street Hobart GPO Box 725 Hobart 7001 Australia T 03 6231 9593 F 03 6231 9594 email jim@armyarchitects.com.au</small>		<small>DATE SCALE DWG NO. REV. AUG 2006 AS SHOWN 0406-L01P B</small>	
morrison & breytenbach architects P/L		DATE PRINTED: 18/8/06	



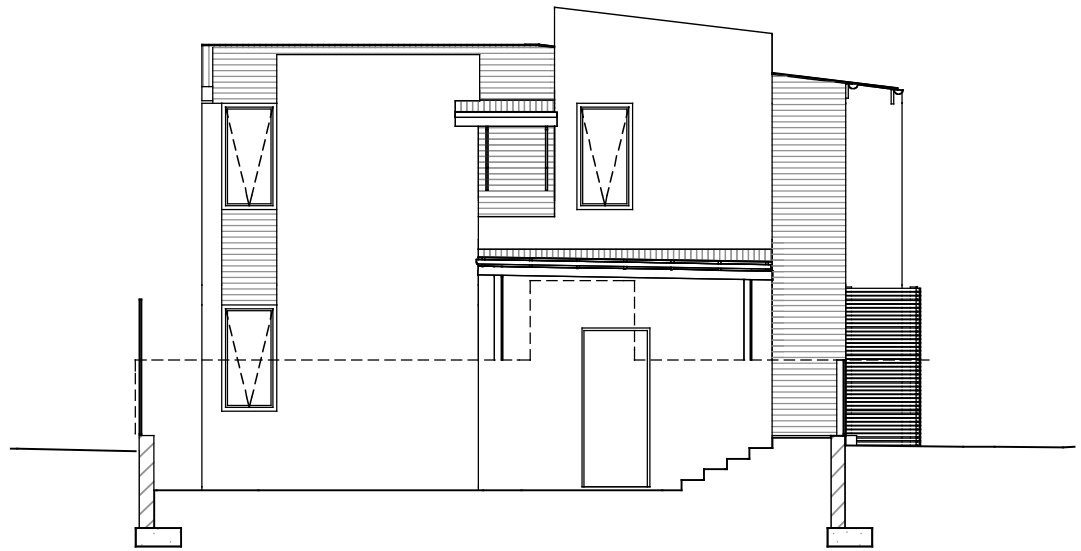
VIRIDIAN - HOUSE 01  
NORTH EAST ELEVATION



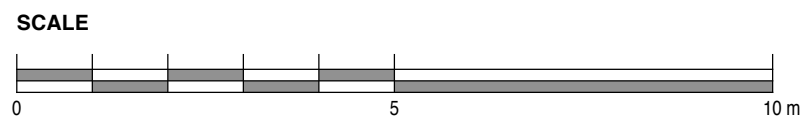
VIRIDIAN - HOUSE 01  
NORTH WEST ELEVATION



VIRIDIAN - HOUSE 01  
SOUTH EAST ELEVATION



VIRIDIAN - HOUSE 01  
SOUTH WEST ELEVATION (STREET SIDE)



PROJECT <b>HOUSING DEVELOPMENT</b> <b>301 MURRAY STREET - HOBART</b>		DRAWING TITLE <b>HOUSE TITLES SETOUT</b> <b>HOUSE 01 ELEVATIONS</b>			
82 Warwick Street Hobart GPO Box 725 Hobart 7001 Australia T 03 6231 9593 F 03 6231 9594 email jim@jimcarlisle.com.au		DATE AUG 2006	SCALE AS SHOWN	DWG NO. <b>0406-L01E</b>	REV.
morrison & breytenbach architects P/L		DATE PRINTED: 18/8/06			