

VIRIDIAN
SITE PLAN KEY

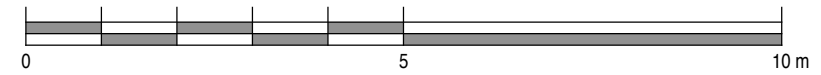
VIRIDIAN
HOUSE 02
TYPE 07

		AREAS	
BEDROOMS:	3	INTERNAL:	107.5 m ²
BATHROOMS:	2	TERRACE:	14.4 m ²
GUEST WC:	1	DECK:	3.6 m ²
PARKING SPACES:	2		
CARPARK No's:	3 & 4	LAND AREA:	147.9 m ²

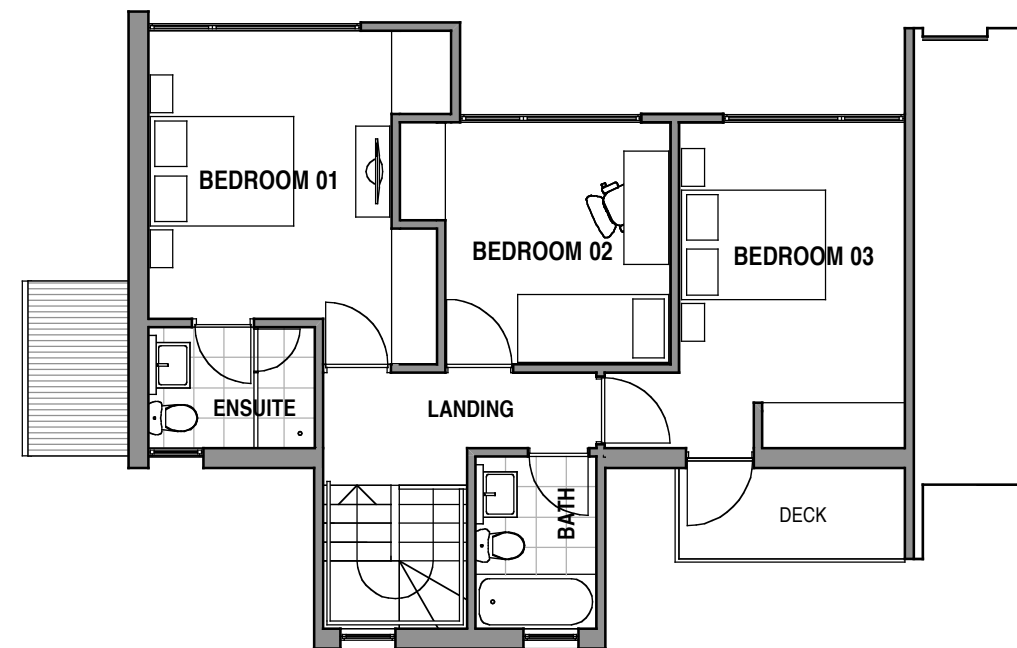
NOTE:

PLANS & DETAILS MAY BE SUBJECT TO VARIATIONS. AREAS ARE APPROXIMATE ONLY.


SCALE



VIRIDIAN - HOUSE 02
GROUND FLOOR PLAN



VIRIDIAN - HOUSE 02
FIRST FLOOR PLAN

PROJECT HOUSING DEVELOPMENT 301 MURRAY STREET - HOBART		DRAWING TITLE HOUSE TITLES SETOUT HOUSE 02 PLANS	
82 Warwick Street Hobart GPO Box 725 Hobart 7001 Australia T 03 6231 9593 F 03 6231 9594 email jim@morrisarchitects.com.au	 morrison & breytenbach architects P/L		DATE SCALE DWG NO. REV. AUG 2006 AS SHOWN 0406-L02P A DATE PRINTED: 18/8/06

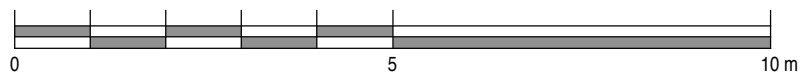


VIRIDIAN - HOUSE 02
NORTH WEST ELEVATION



VIRIDIAN - HOUSE 02
SOUTH EAST ELEVATION (ENTRANCE)

SCALE



PROJECT HOUSING DEVELOPMENT 301 MURRAY STREET - HOBART		DRAWING TITLE HOUSE TITLES SETOUT HOUSE 02 ELEVATIONS			
82 Warwick Street Hobart GPO Box 726 Hobart 7001 Australia T 03 6231 6563 F 03 6231 6594 email jim@mbaarchitects.com.au		DATE AUG 2006	SCALE AS SHOWN	DWG NO. 0406-L02E	REV.
		morrison & breytenbach architects P/L		DATE PRINTED: 18/8/06	