

VIRIDIAN  
SITE PLAN KEY

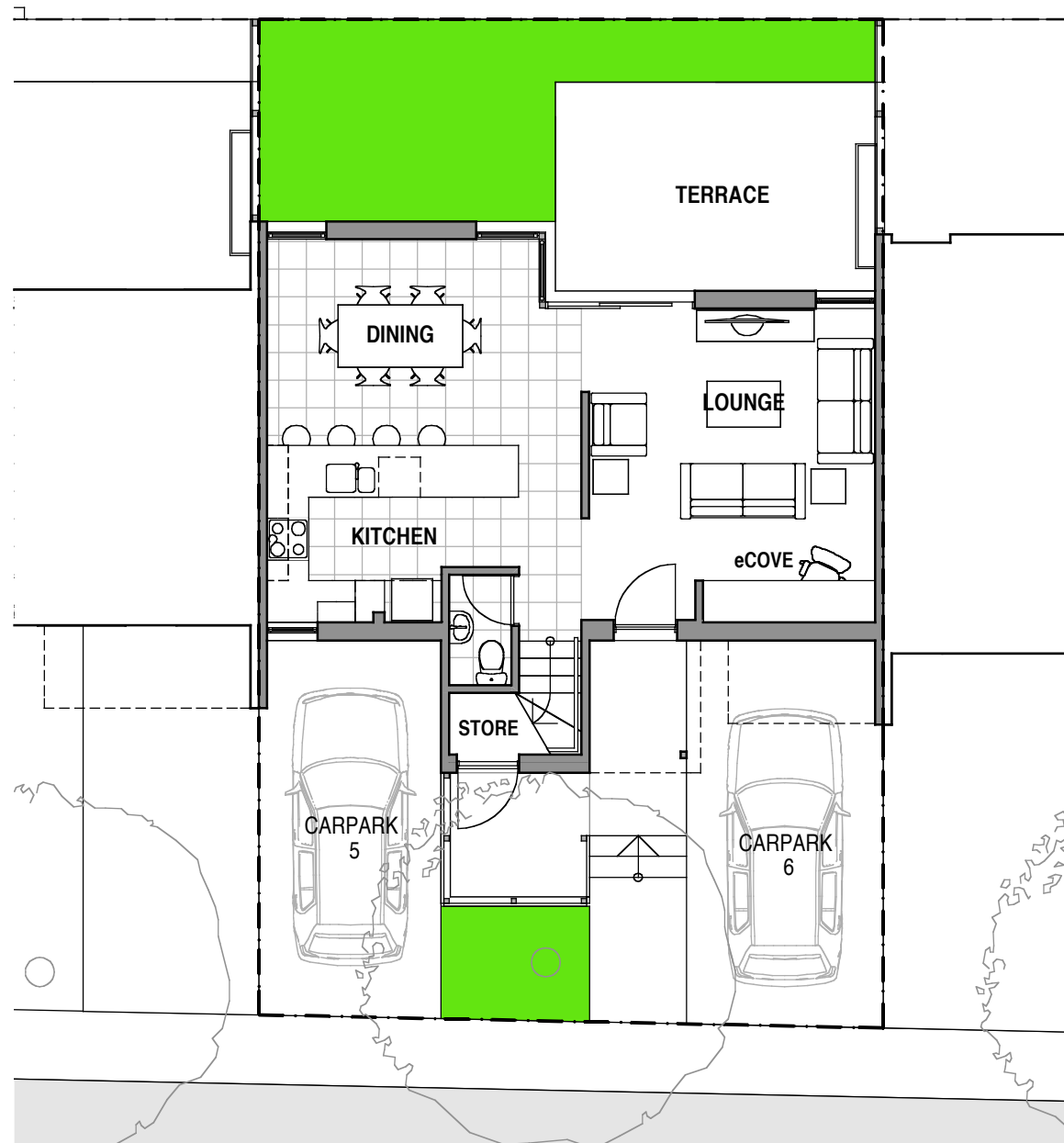
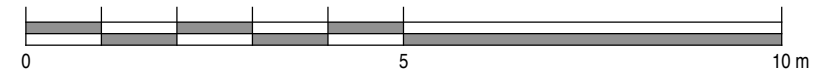
VIRIDIAN  
**HOUSE 03**  
TYPE 02

		AREAS	
BEDROOMS:	2	INTERNAL:	95.5 m <sup>2</sup>
BATHROOMS:	2	TERRACE:	11.5 m <sup>2</sup>
GUEST WC:	1	DECK:	2.5 m <sup>2</sup>
PARKING SPACES:	2		
CARPARK No's:	5 & 6	LAND AREA:	130.0 m <sup>2</sup>

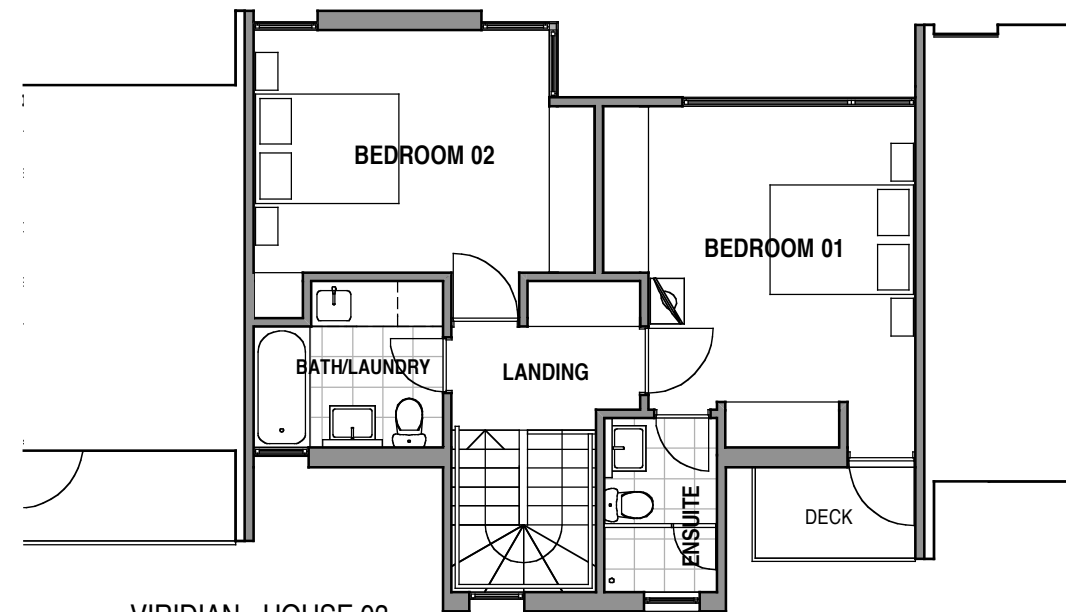
NOTE:

PLANS & DETAILS MAY BE SUBJECT TO VARIATIONS. AREAS ARE APPROXIMATE ONLY.

SCALE

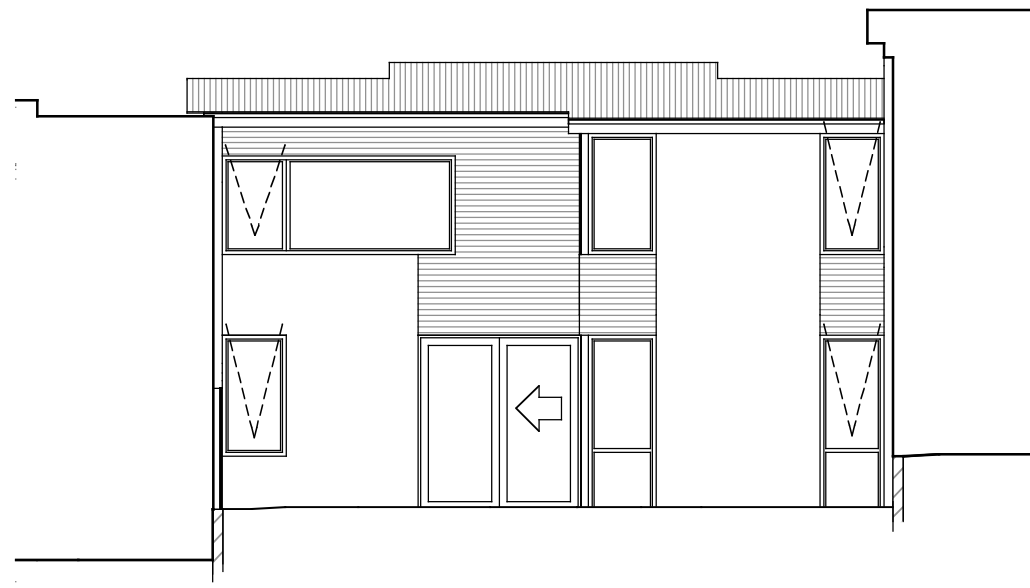


VIRIDIAN - HOUSE 03  
GROUND FLOOR PLAN



VIRIDIAN - HOUSE 03  
FIRST FLOOR PLAN

PROJECT <b>HOUSING DEVELOPMENT</b> 301 MURRAY STREET - HOBART		DRAWING TITLE <b>HOUSE TITLES SETOUT</b> HOUSE 03 PLANS	
82 Warwick Street Hobart GPO Box 725 Hobart 7001 Australia T 03 6231 9593 F 03 6231 9594 email <a href="mailto:info@mjb-architects.com.au">info@mjb-architects.com.au</a>		morrison & breytenbach architects P/L	DATE SCALE DWG NO. REV. AUG 2006 AS SHOWN <b>0406-L03P</b> A
			DATE PRINTED: 18/8/06

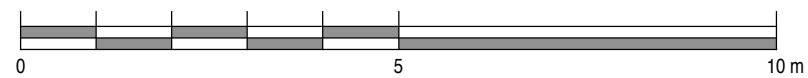


VIRIDIAN - HOUSE 03  
**NORTH WEST ELEVATION**



VIRIDIAN - HOUSE 03  
**SOUTH EAST ELEVATION (ENTRANCE)**

**SCALE**



PROJECT <b>HOUSING DEVELOPMENT</b> 301 MURRAY STREET - HOBART		DRAWING TITLE <b>HOUSE TITLES SETOUT</b> HOUSE 03 ELEVATIONS			
82 Warwick Street Hobart GPO Box 725 Hobart 7001 Australia T 03 6231 9593 F 03 6231 9594 email jim@mbaarchitects.com.au		DATE AUG 2006	SCALE AS SHOWN	DWG NO. <b>0406-L03E</b>	REV.
morrison & breytenbach architects P/L		DATE PRINTED: 18/8/06			