

VIRIDIAN
SITE PLAN KEY

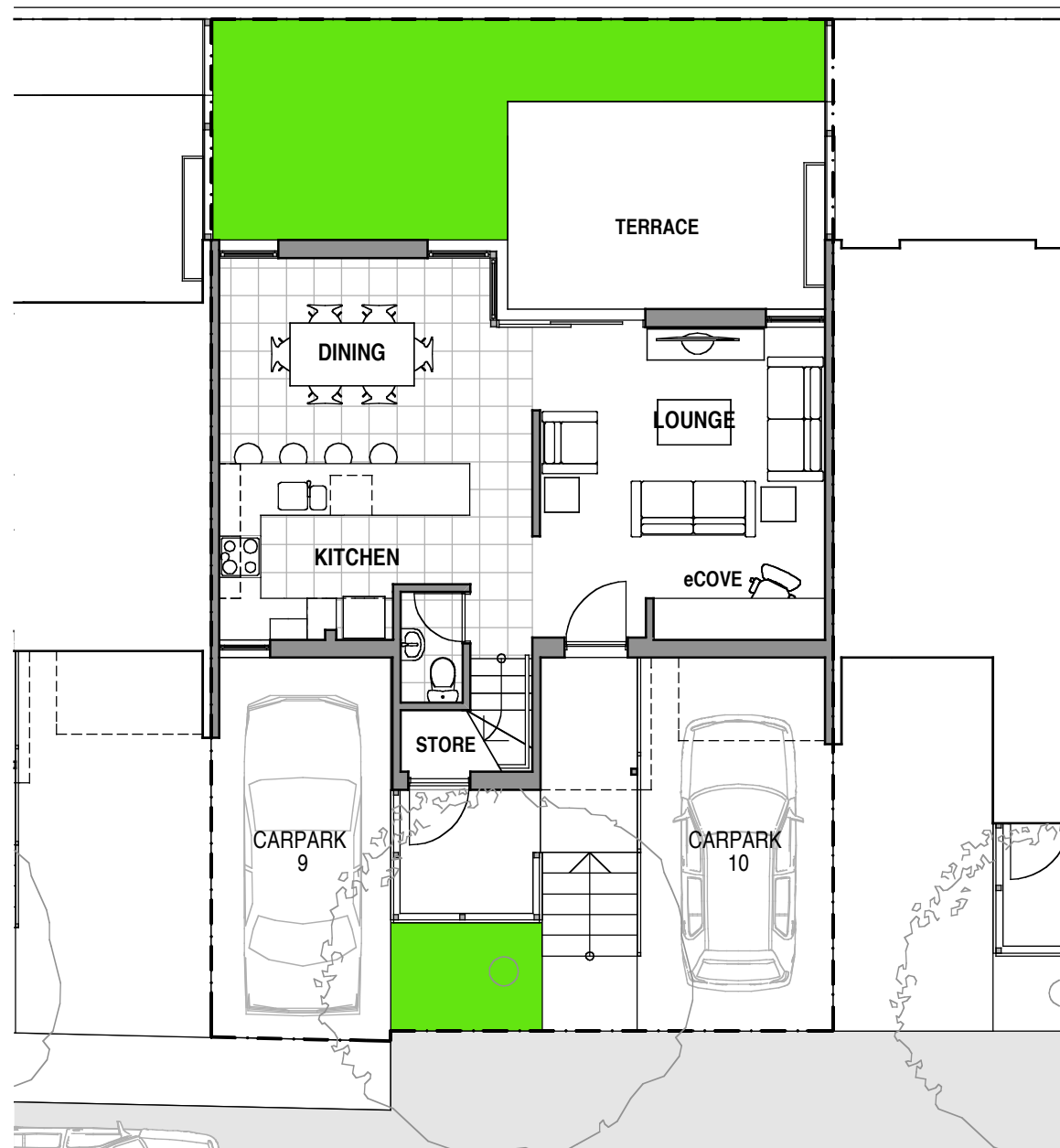
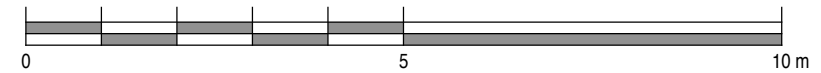
VIRIDIAN
HOUSE 05
TYPE 02

		AREAS	
BEDROOMS:	2	INTERNAL:	95.5 m ²
BATHROOMS:	2	TERRACE:	11.5 m ²
GUEST WC:	1	DECK:	2.5 m ²
PARKING SPACES:	2		
CARPARK No's:	9 & 10	LAND AREA:	132.0 m ²

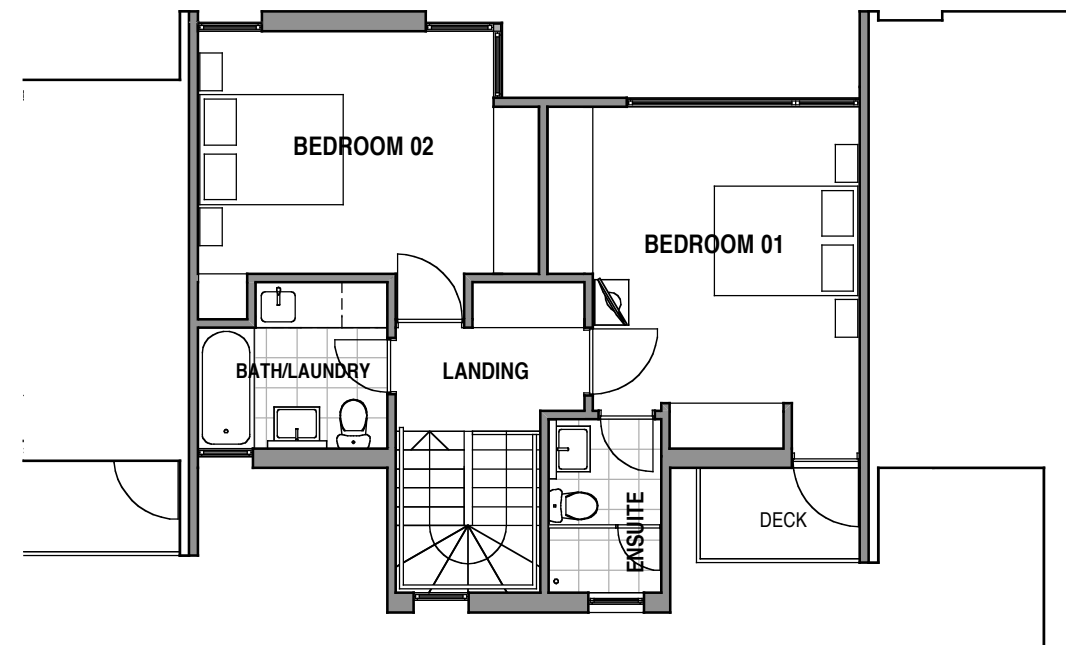
NOTE:

PLANS & DETAILS MAY BE SUBJECT TO VARIATIONS. AREAS ARE APPROXIMATE ONLY.

SCALE

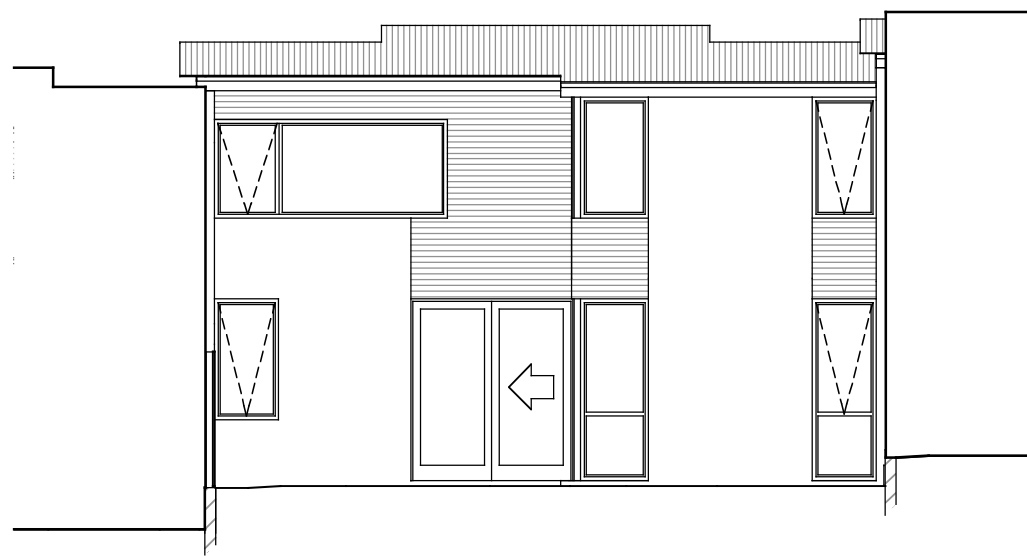


VIRIDIAN - HOUSE 05
GROUND FLOOR PLAN



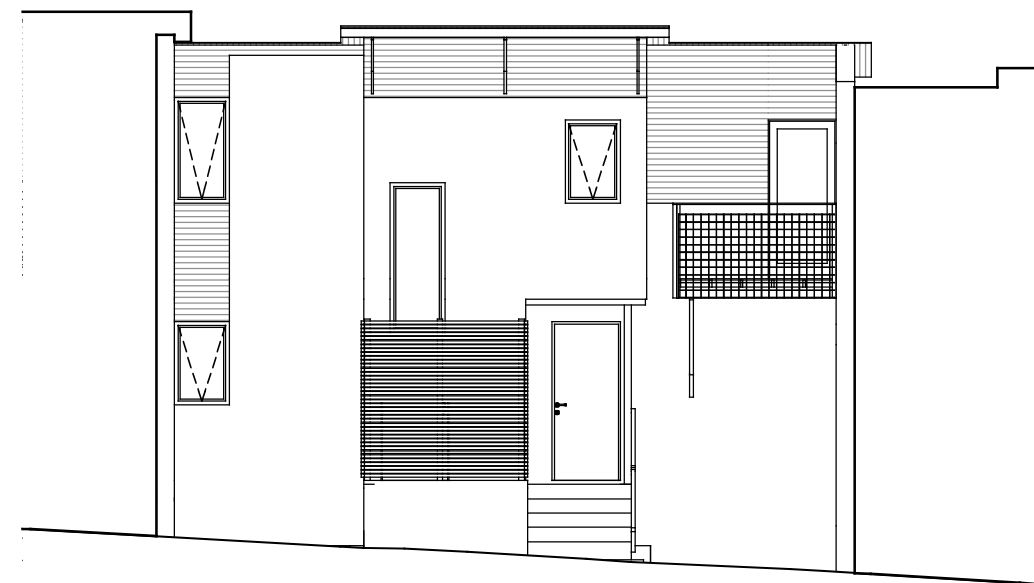
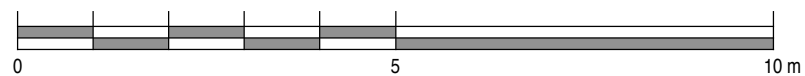
VIRIDIAN - HOUSE 05
FIRST FLOOR PLAN

PROJECT HOUSING DEVELOPMENT 301 MURRAY STREET - HOBART		DRAWING TITLE HOUSE TITLES SETOUT HOUSE 05 PLANS	
82 Warwick Street Hobart GPO Box 725 Hobart 7001 Australia T 03 6231 9593 F 03 6231 9594 email jim@mbarchitects.com.au		DATE AUG 2006	SCALE AS SHOWN
morrison & breitenbach architects P/L		DWG NO. 0406-L05P	REV. A
DATE PRINTED: 18/8/06			




VIRIDIAN - HOUSE 05
NORTH WEST ELEVATION

SCALE



VIRIDIAN - HOUSE 05
SOUTH EAST ELEVATION (ENTRANCE)

PROJECT HOUSING DEVELOPMENT 301 MURRAY STREET - HOBART		DRAWING TITLE HOUSE TITLES SETOUT HOUSE 05 ELEVATIONS	
82 Warwick Street Hobart GPO Box 725 Hobart 7001 Australia T 03 6231 9593 F 03 6231 9594 email jim@jimbarchitects.com.au	 morrison & breytenbach architects P/L		DATE SCALE DWG NO. REV. AUG 2006 AS SHOWN 0406-L05E
			DATE PRINTED: 18/8/06