

VIRIDIAN
SITE PLAN KEY

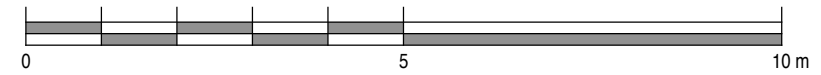
VIRIDIAN
HOUSE 07
TYPE 03

		AREAS	
BEDROOMS:	3	INTERNAL:	120.6 m ²
BATHROOMS:	2	TERRACES:	29.1 m ²
GUEST WC:	1	DECK:	4.2 m ²
PARKING SPACES:	2	EXT. STORE:	1.8 m ²
CARPARK No's:	14 & 15	LAND AREA:	192.8 m ²

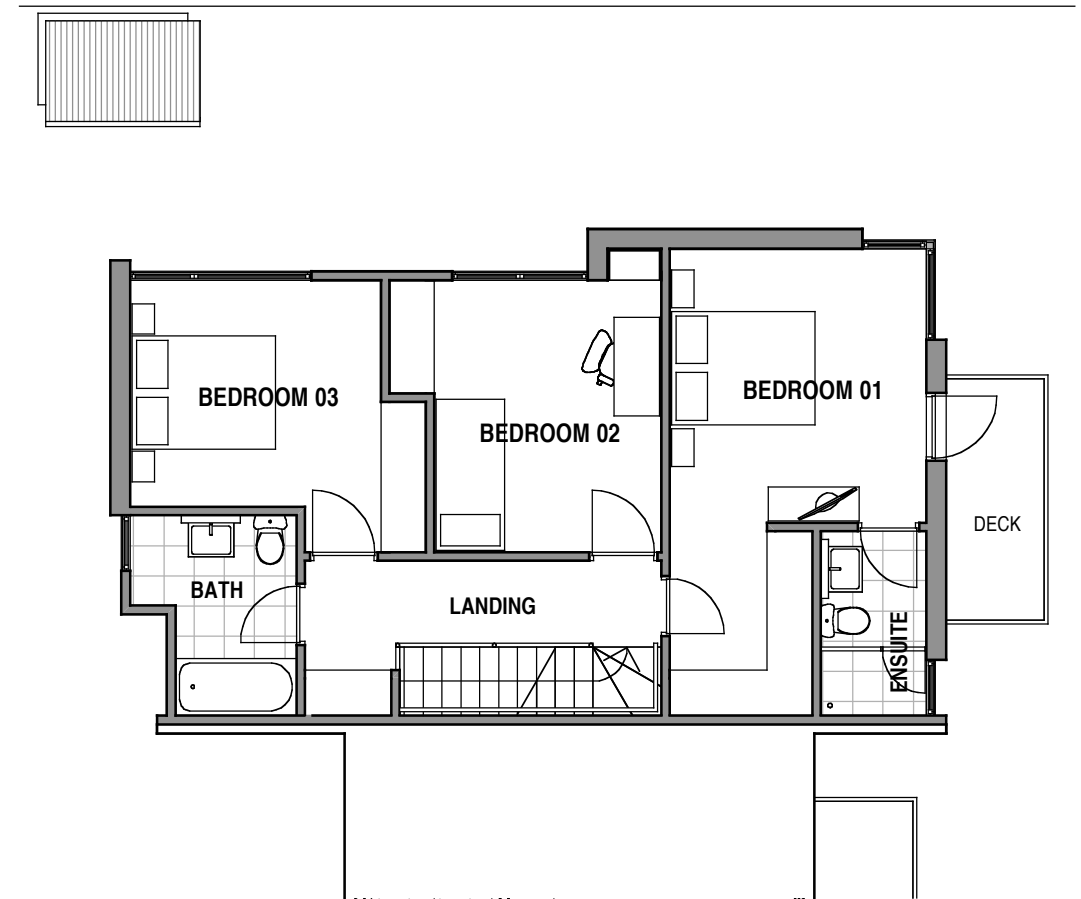
NOTE:

PLANS & DETAILS MAY BE SUBJECT TO VARIATIONS. AREAS ARE APPROXIMATE ONLY.

SCALE



VIRIDIAN - HOUSE 07
GROUND FLOOR PLAN

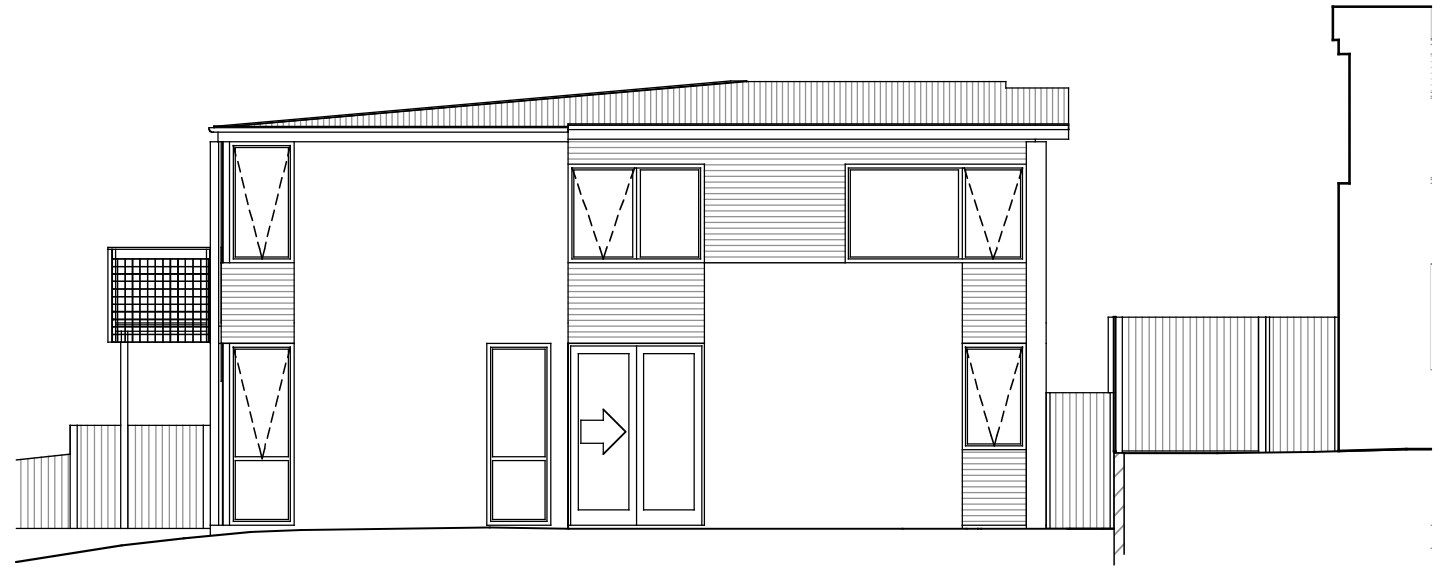


VIRIDIAN - HOUSE 07
FIRST FLOOR PLAN

PROJECT HOUSING DEVELOPMENT 301 MURRAY STREET - HOBART		DRAWING TITLE HOUSE TITLES SETOUT HOUSE 07 PLANS		
<small>82 Warwick Street Hobart GPO Box 725 Hobart 7001 Australia T 03 6231 9593 F 03 6231 9594 email jim@mba-architects.com.au</small>		DATE AUG 2006	SCALE AS SHOWN	DWG NO. 0406-L07P
morrison & breitenbach architects P/L		REV. DATE PRINTED: 18/8/06		

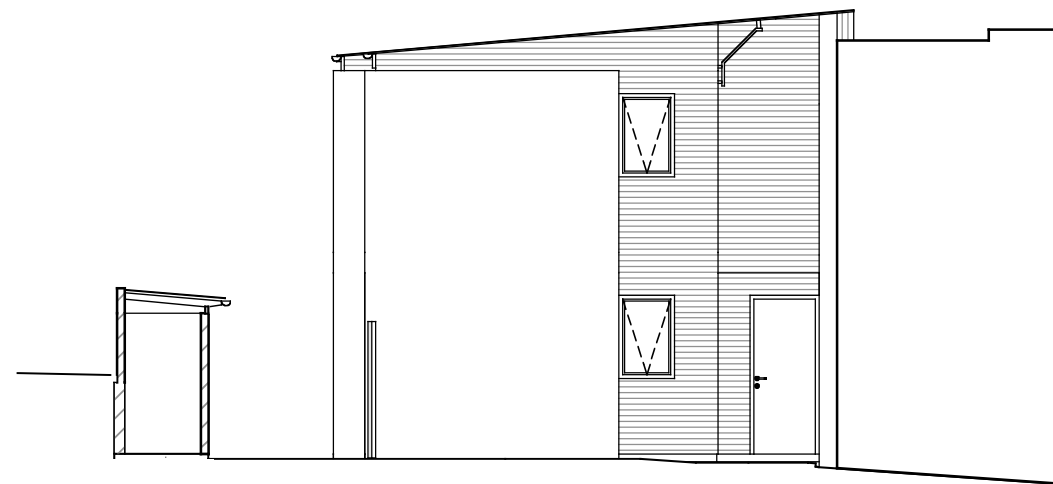
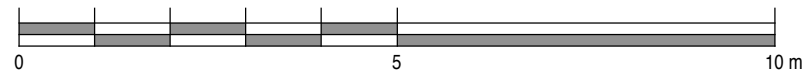


VIRIDIAN - HOUSE 07
NORTH EAST ELEVATION




VIRIDIAN - HOUSE 07
NORTH WEST ELEVATION

SCALE



VIRIDIAN - HOUSE 07
SOUTH WEST ELEVATION (ENTRANCE)

PROJECT HOUSING DEVELOPMENT 301 MURRAY STREET - HOBART		DRAWING TITLE HOUSE TITLES SETOUT HOUSE 07 ELEVATIONS	
82 Warwick Street Hobart GPO Box 725 Hobart 7001 Australia T 03 6231 8593 F 03 6231 8594 email jim@mbaarchitects.com.au	 morrison & breytenbach architects P/L		DATE SCALE DWG NO. REV. AUG 2006 AS SHOWN 0406-L07E
			DATE PRINTED: 18/8/06