

VIRIDIAN
SITE PLAN KEY

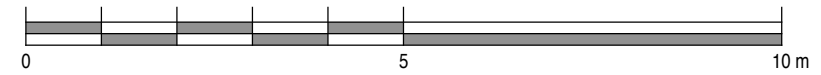
VIRIDIAN
HOUSE 09
TYPE 04

		AREAS	
BEDROOMS:	2	INTERNAL:	94.4 m ²
BATHROOMS:	2	TERRACE:	12.1 m ²
GUEST WC:	1	DECK:	3.8 m ²
PARKING SPACES:	1		
CARPARK No's:	18	LAND AREA:	119.9 m ²

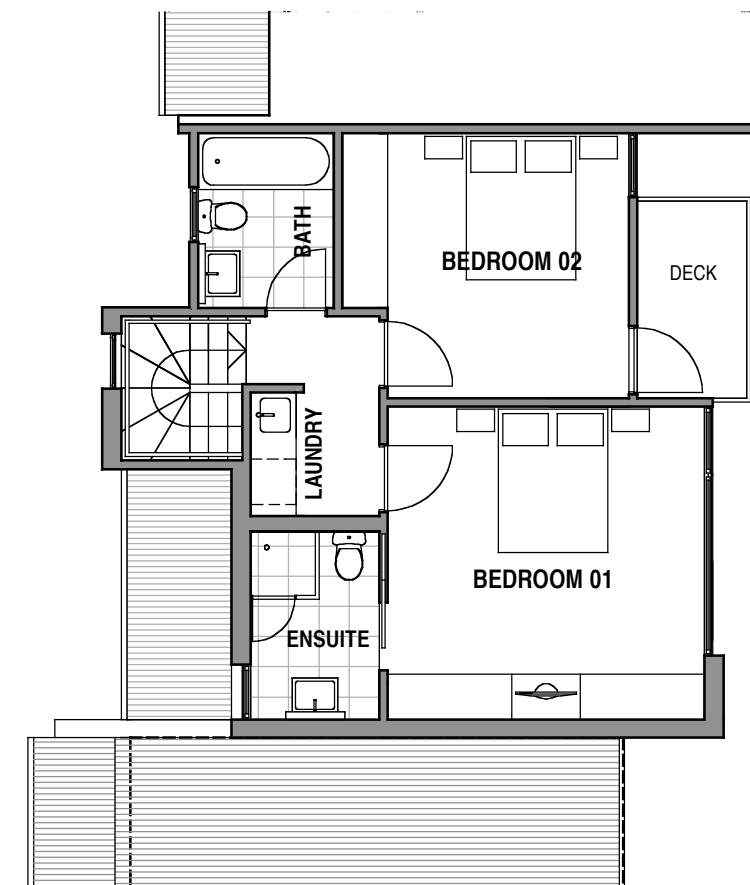
NOTE:

PLANS & DETAILS MAY BE SUBJECT TO VARIATIONS. AREAS ARE APPROXIMATE ONLY.

SCALE

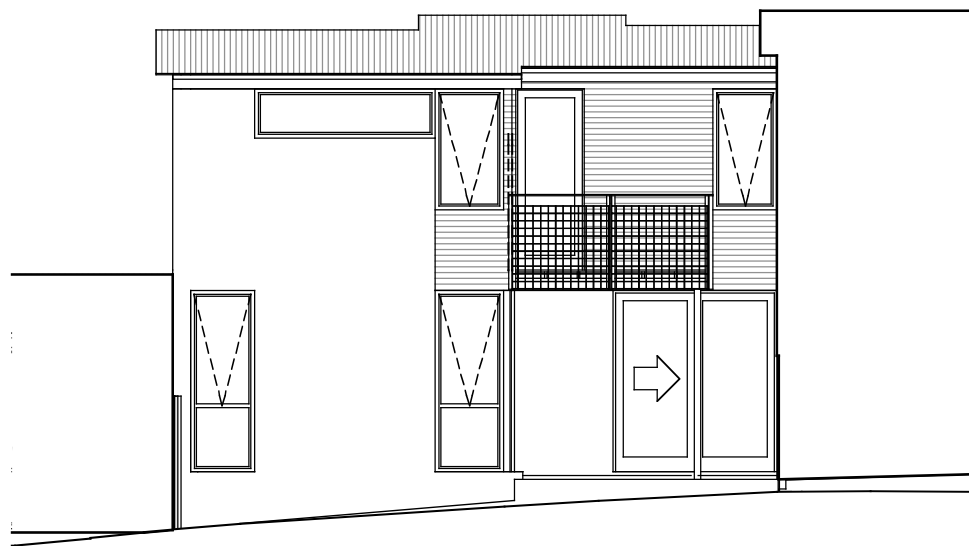


VIRIDIAN - HOUSE 09
GROUND FLOOR PLAN

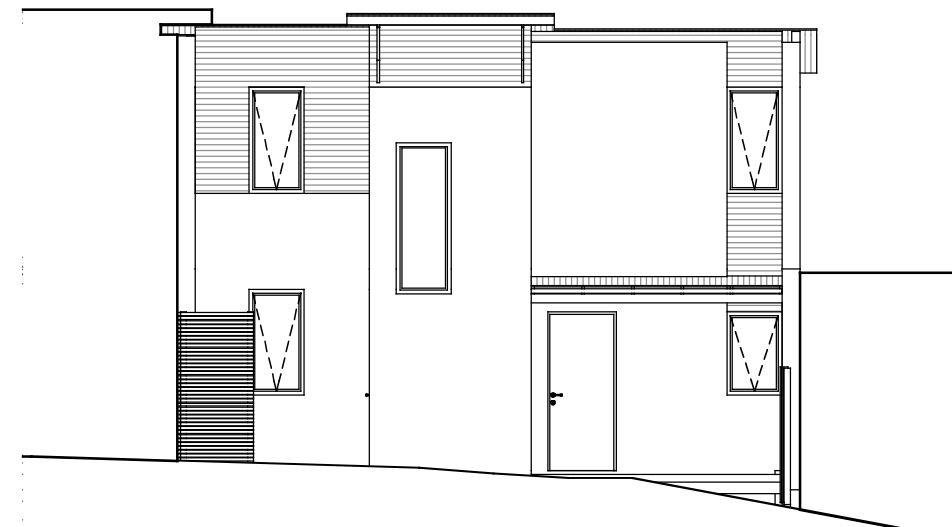


VIRIDIAN - HOUSE 09
FIRST FLOOR PLAN

PROJECT	HOUSING DEVELOPMENT 301 MURRAY STREET - HOBART			DRAWING TITLE	HOUSE TITLES SETOUT HOUSE 09 PLANS		
82 Warwick Street Hobart GPO Box 725 Hobart 7001 Australia T 03 6231 9593 F 03 6231 9594 email jim@mbaarchitects.com.au	 morrison & breytenbach architects P/L			DATE	SCALE	DWG NO.	REV.
AUG 2006				AS SHOWN	0406-L09P		
				DATE PRINTED:	18/8/06		

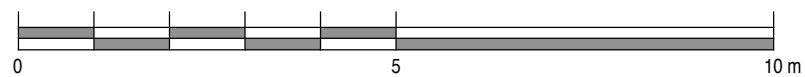



VIRIDIAN - HOUSE 09
NORTH EAST ELEVATION



VIRIDIAN - HOUSE 09
SOUTH WEST ELEVATION (ENTRANCE)

SCALE



PROJECT HOUSING DEVELOPMENT 301 MURRAY STREET - HOBART		DRAWING TITLE HOUSE TITLES SETOUT HOUSE 09 ELEVATIONS	
82 Warwick Street Hobart GPO Box 725 Hobart 7001 Australia T 03 6231 9593 F 03 6231 9594 email jim@mbaarchitects.com.au	 morrison & breytenbach architects P/L		DATE SCALE DWG NO. REV. AUG 2006 AS SHOWN 0406-L09E
		DATE PRINTED: 18/8/06	