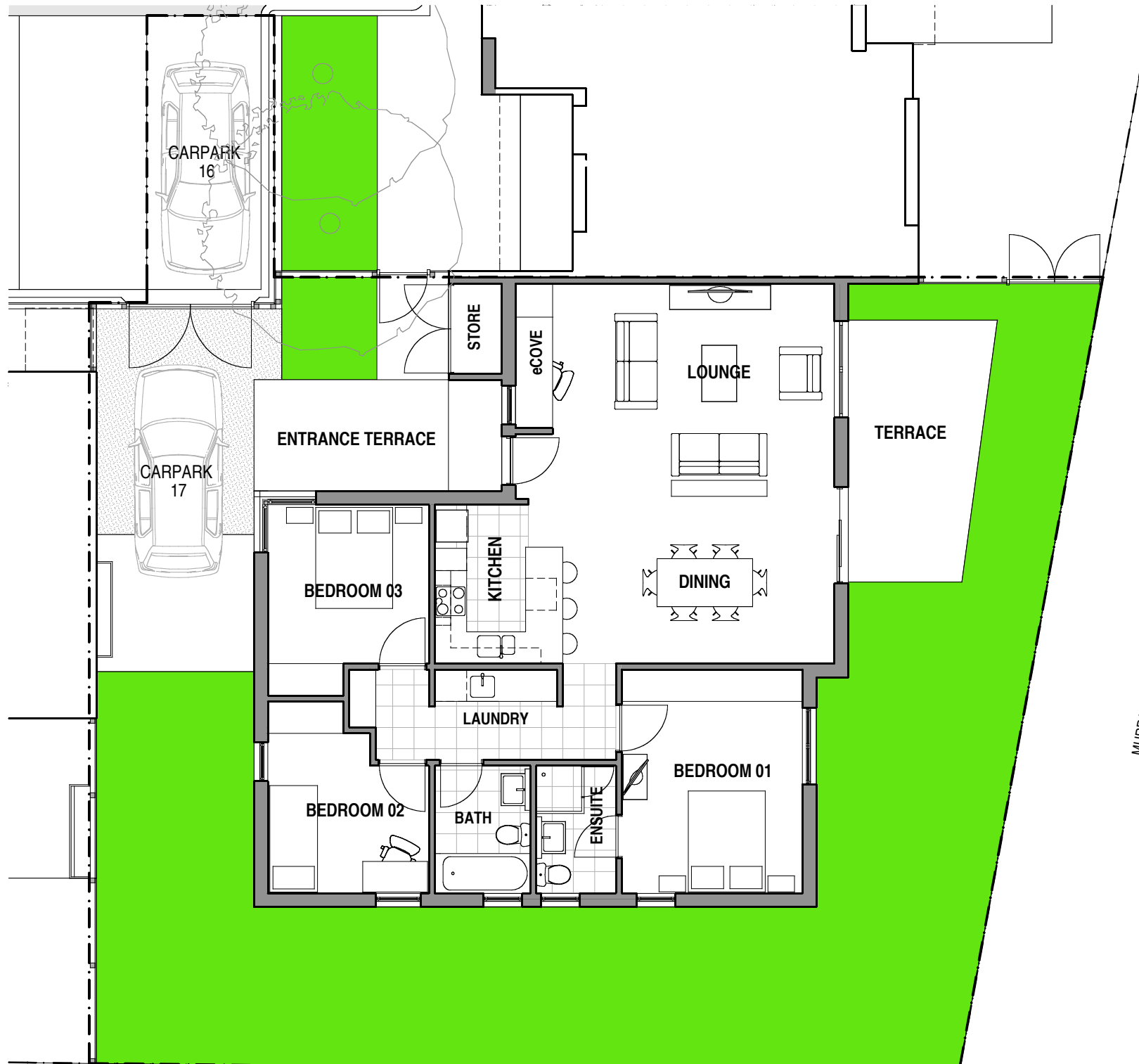


VIRIDIAN  
**HOUSE 10**  
 TYPE 05



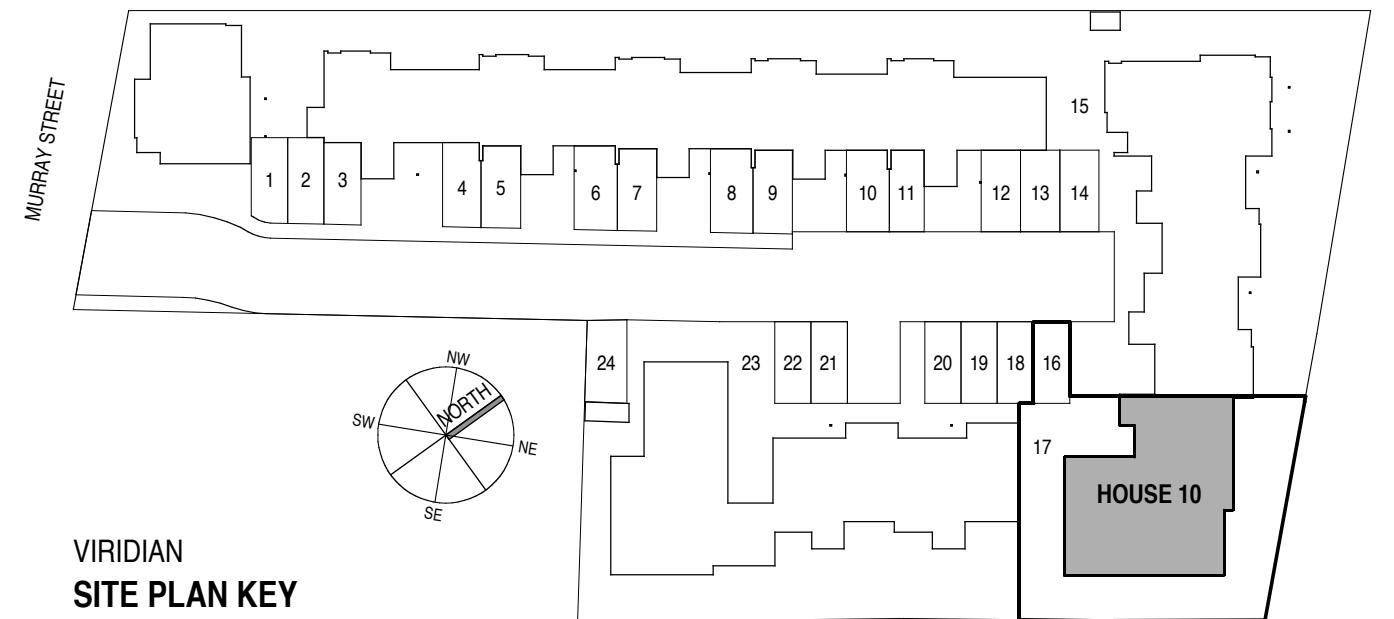
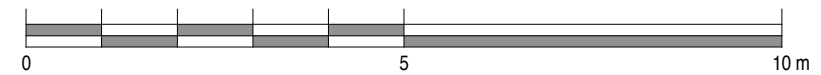
AREAS

BEDROOMS:	3	INTERNAL:	100.3 m <sup>2</sup>
BATHROOMS:	2	TERRACES:	21.9 m <sup>2</sup>
PARKING SPACES:	2	EXT. STORE:	1.5 m <sup>2</sup>
CARPARK No's:	16 & 17		
		LAND AREA:	272.5 m <sup>2</sup>

NOTE:

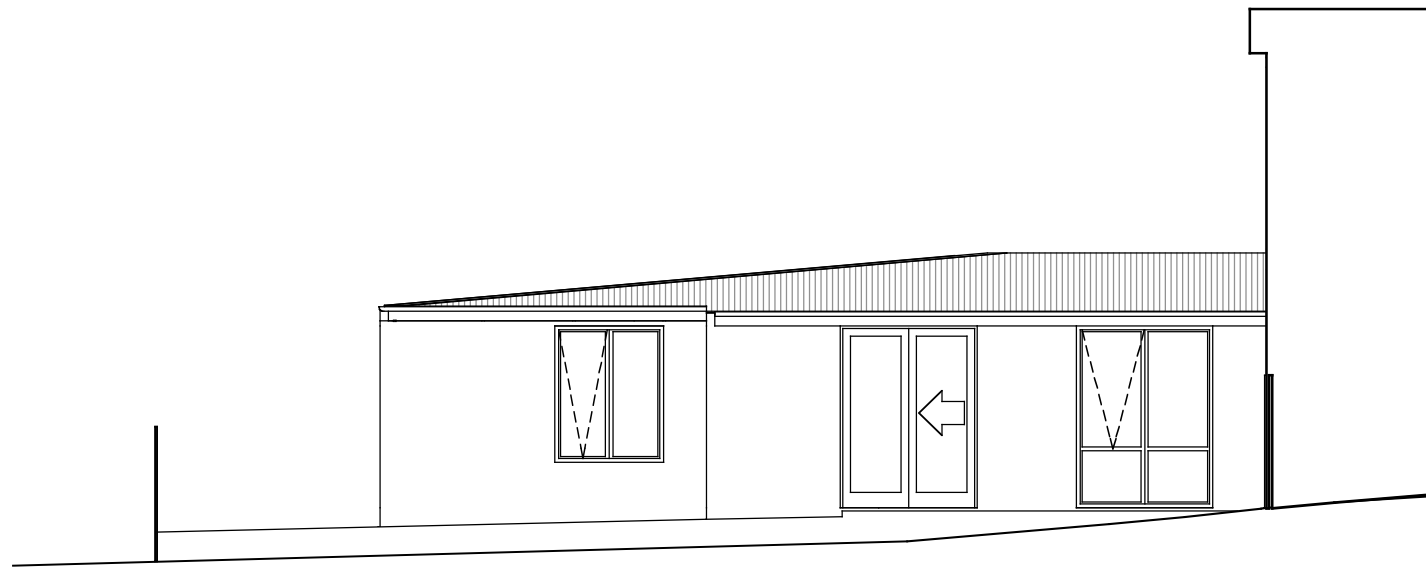
PLANS & DETAILS MAY BE SUBJECT TO VARIATIONS. AREAS ARE APPROXIMATE ONLY.

SCALE

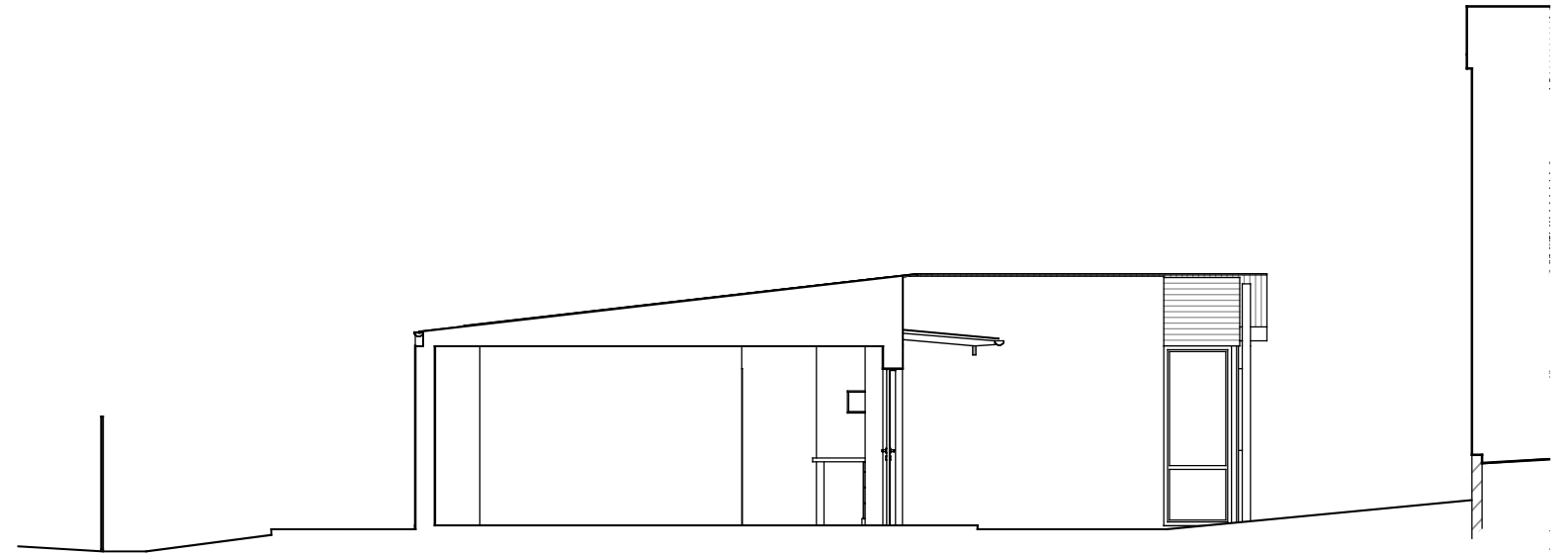


VIRIDIAN - HOUSE 10  
**GROUND FLOOR PLAN**

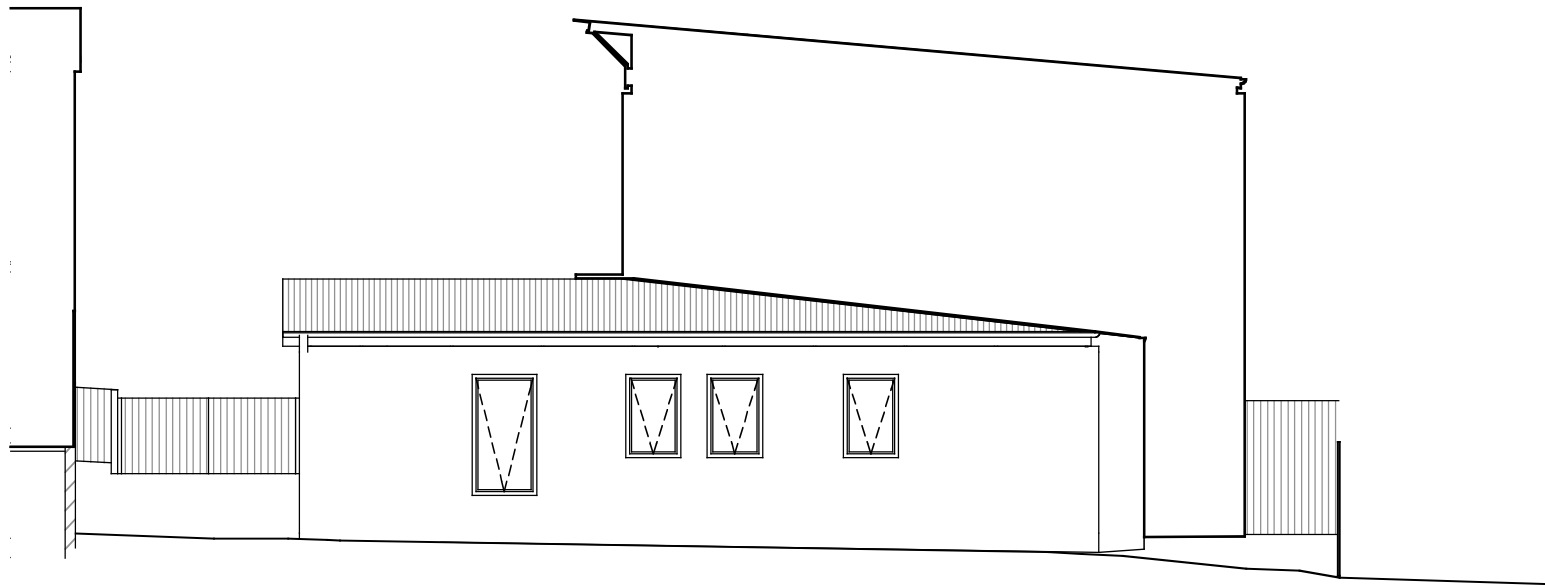
PROJECT	<b>HOUSING DEVELOPMENT</b> 301 MURRAY STREET - HOBART			DRAWING TITLE	<b>HOUSE TITLES SETOUT</b> HOUSE 10 PLANS		
82 Warwick Street Hobart GPO Box 725 Hobart 7001 Australia T 03 6231 9093 F 03 6231 9094 email jim@morrisarchitects.com.au	 <b>morris &amp; breitenbach architects</b> P/L			DATE	SCALE	DWG NO.	REV.
				AUG 2006	AS SHOWN	<b>0406-L10P</b>	
				DATE PRINTED:	28/9/06		



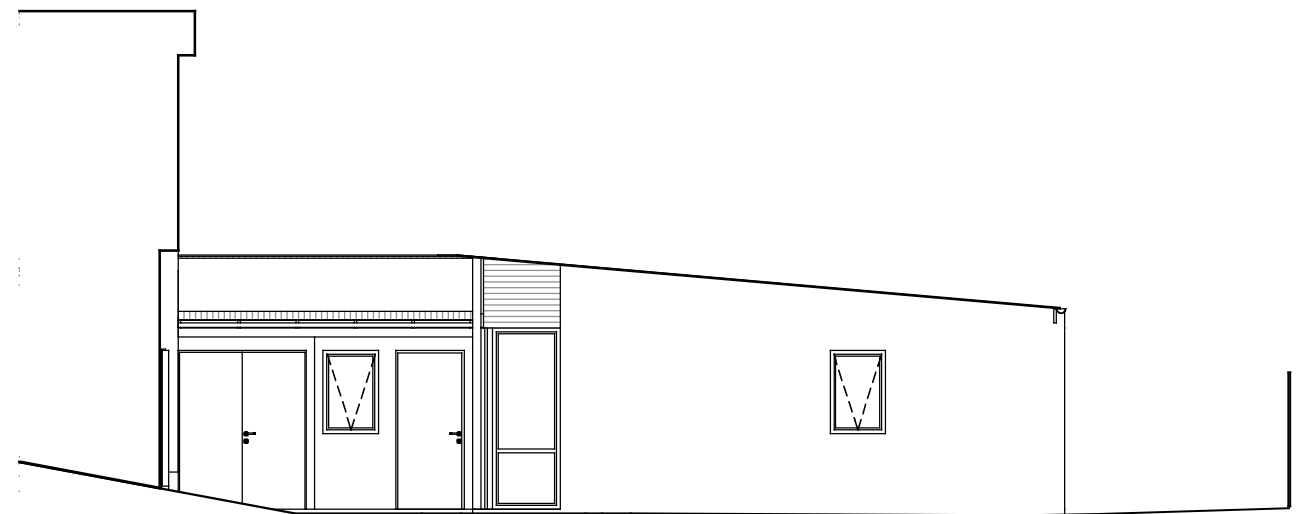
VIRIDIAN - HOUSE 10  
NORTH EAST ELEVATION



VIRIDIAN - HOUSE 10  
NORTH WEST ELEVATION

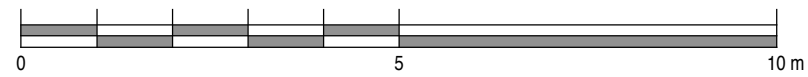


VIRIDIAN - HOUSE 10  
SOUTH EAST ELEVATION



VIRIDIAN - HOUSE 10  
SOUTH WEST ELEVATION (ENTRANCE)

SCALE



PROJECT <b>HOUSING DEVELOPMENT</b> 301 MURRAY STREET - HOBART		DRAWING TITLE <b>HOUSE TITLES SETOUT</b> HOUSE 10 ELEVATIONS	
82 Warwick Street Hobart GPO Box 725 Hobart 7001 Australia T 03 6231 9593 F 03 6231 9594 email jim@mbaarchitects.com.au		DATE SCALE DWG NO. REV. AUG 2006 AS SHOWN <b>0406-L10E</b>	
morrison & breytenbach architects P/L		DATE PRINTED: 18/8/06	