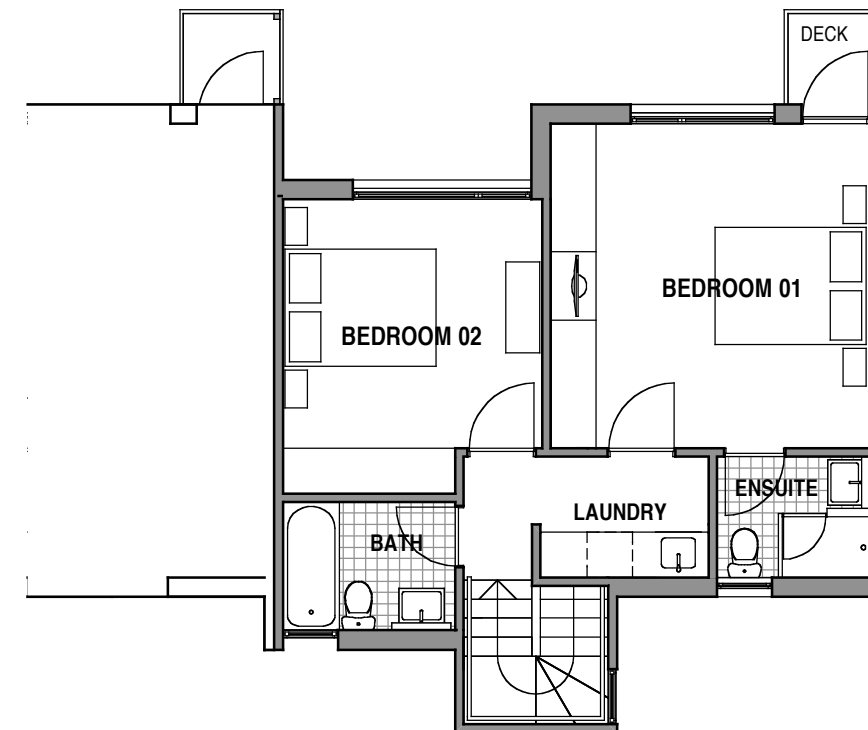
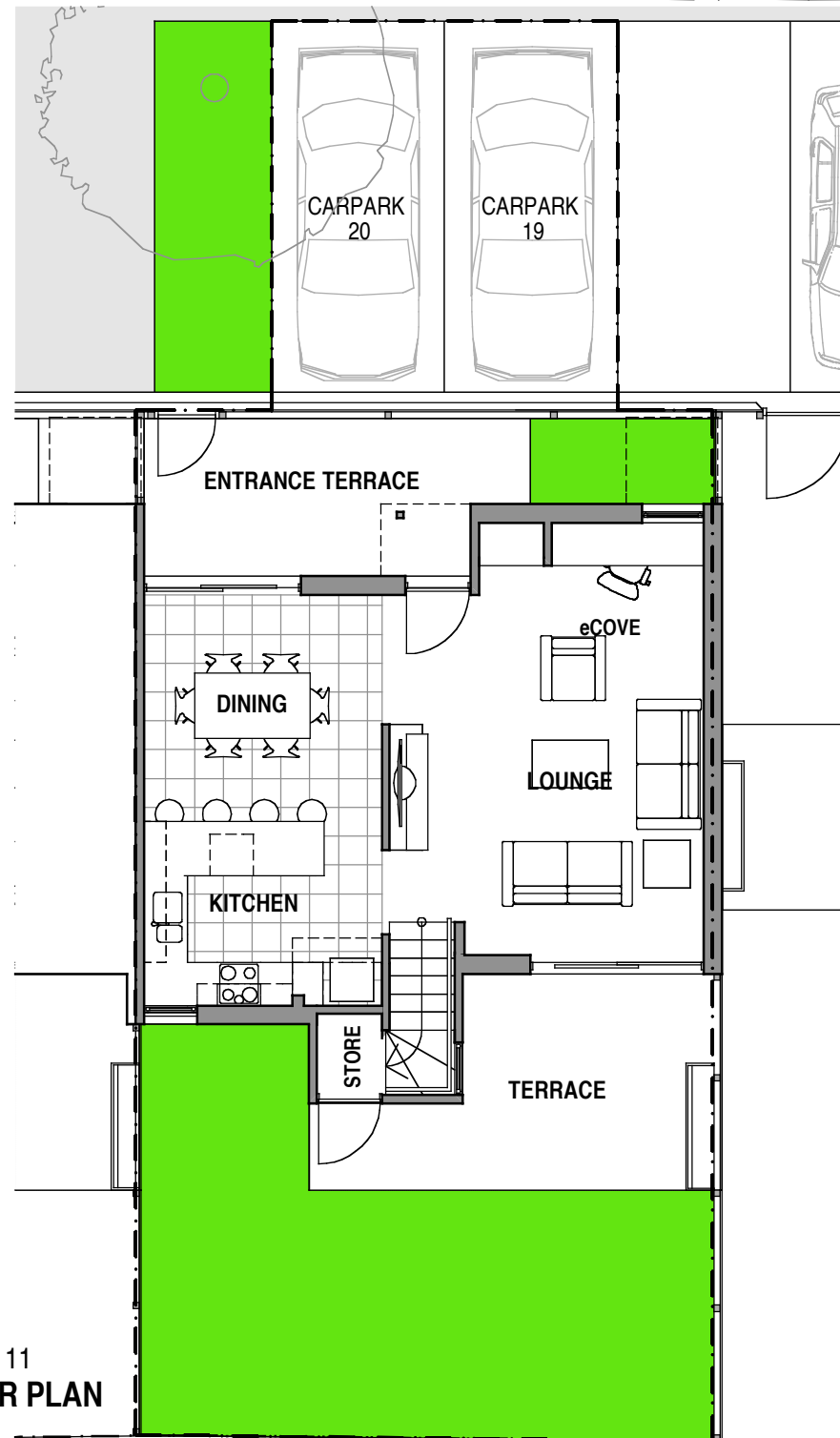
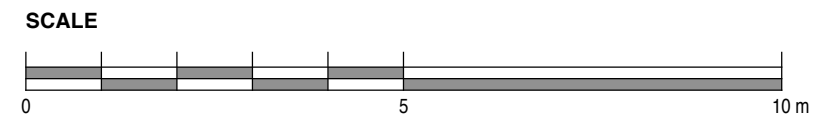


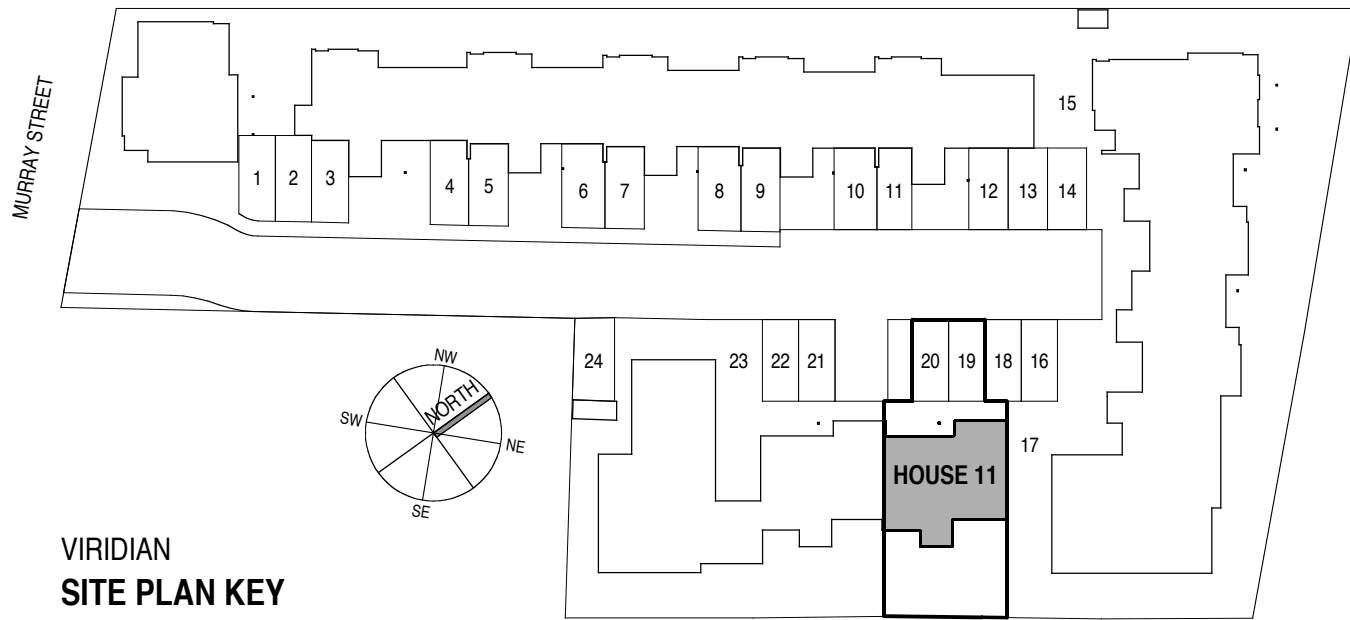
VIRIDIAN
HOUSE 11
TYPE 06

		AREAS	
BEDROOMS:	2	INTERNAL:	93.9 m ²
BATHROOMS:	2	TERRACES:	24.3 m ²
PARKING SPACES:	2	DECK:	1.5 m ²
CARPARK No's:	19 & 20	LAND AREA:	142.1 m ²

NOTE:
PLANS & DETAILS MAY BE SUBJECT TO VARIATIONS. AREAS ARE APPROXIMATE ONLY.



PROJECT HOUSING DEVELOPMENT 301 MURRAY STREET - HOBART		DRAWING TITLE HOUSE TITLES SETOUT HOUSE 11 PLANS	
DATE AUG 2006	SCALE AS SHOWN	DWG NO. 0406-L11P	REV. A
<small>82 Warwick Street Hobart GPO Box 725 Hobart 7001 Australia T 03 6231 9593 F 03 6231 9594 email jim@mbaarchitects.com.au</small>		morrison & breitenbach architects P/L DATE PRINTED: 18/8/06	



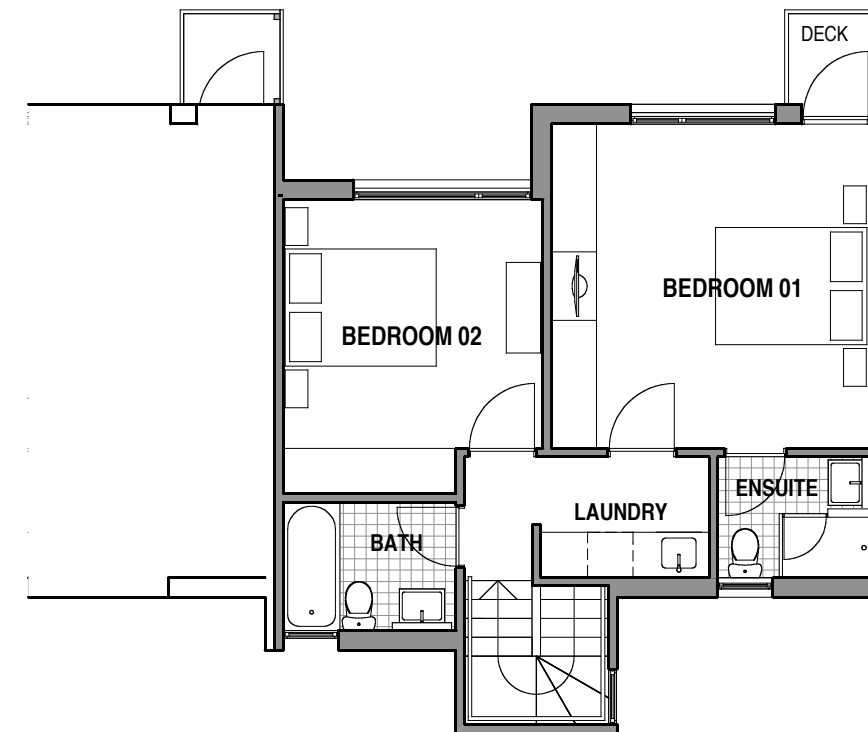
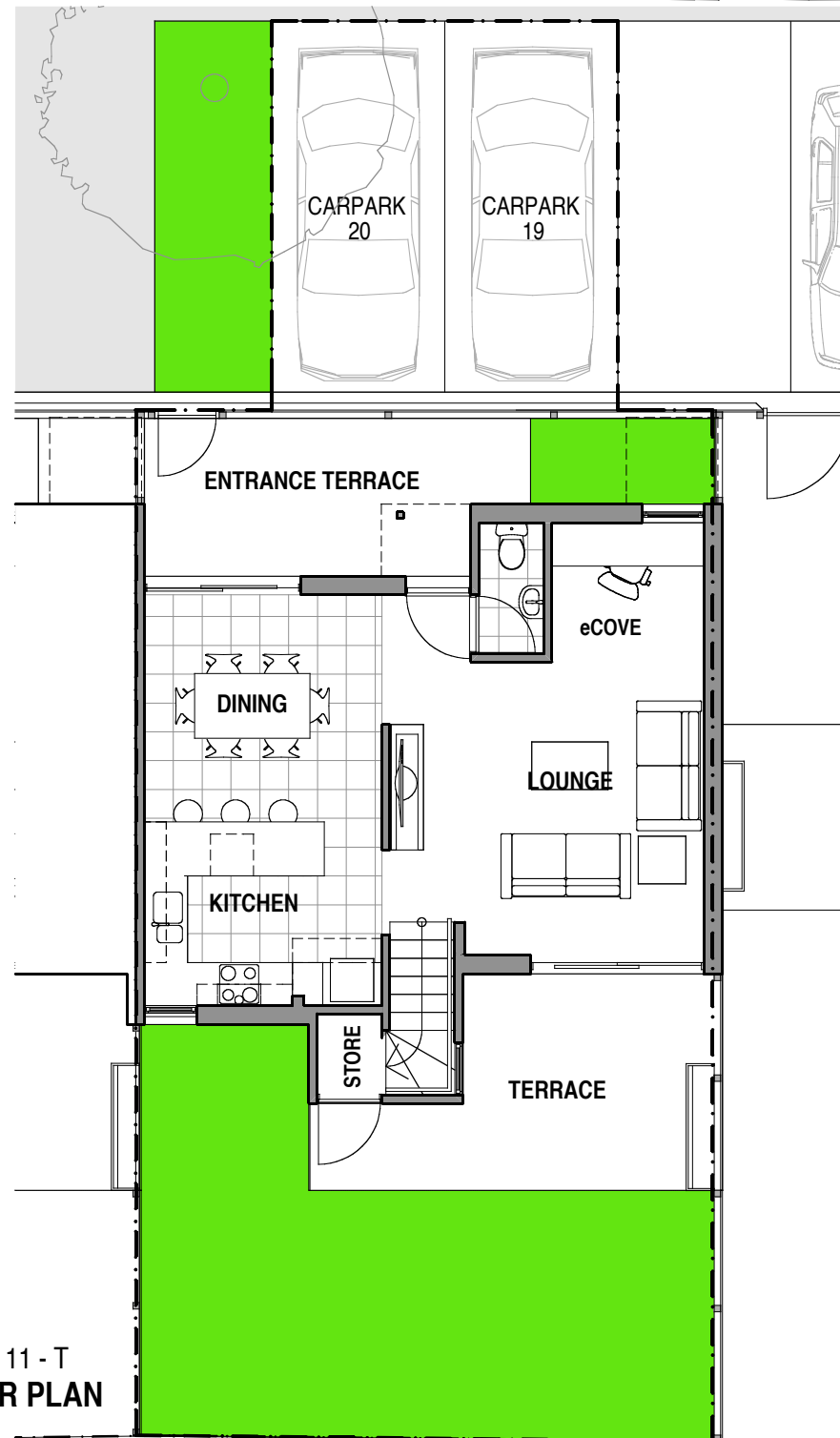
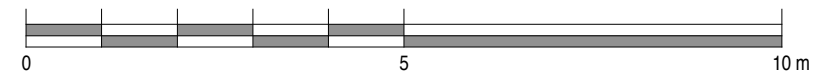
VIRIDIAN
HOUSE 11 - T
TYPE 06T

		AREAS	
BEDROOMS:	2	INTERNAL:	93.9 m ²
BATHROOMS:	2	TERRACES:	24.3 m ²
GUEST WC:	1	DECK:	1.5 m ²
PARKING SPACES:	2		
CARPARK No's:	19 & 20	LAND AREA:	142.1 m ²

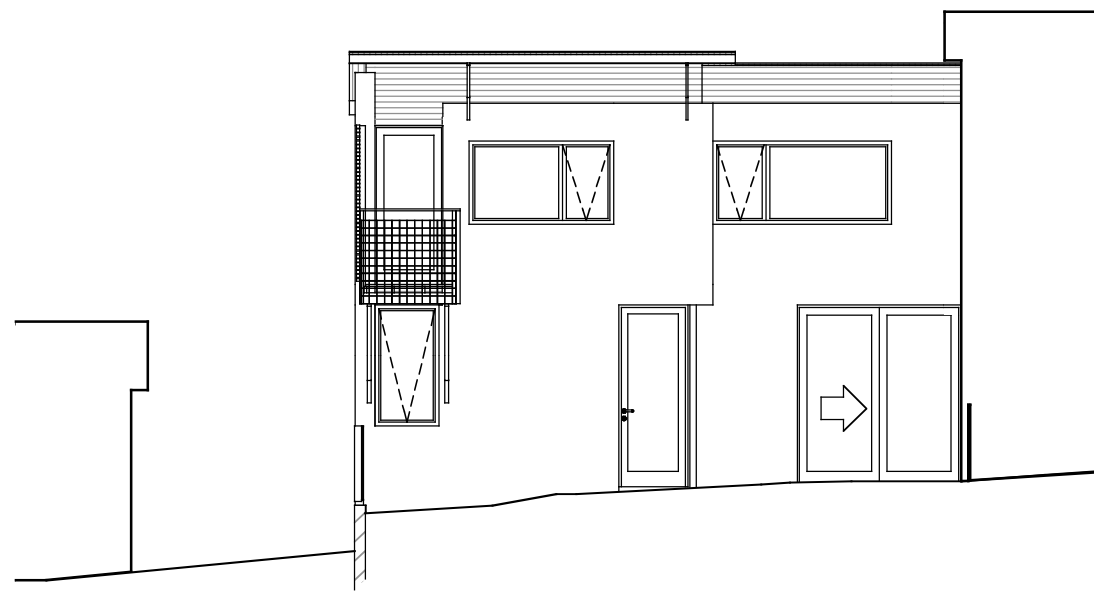
NOTE:

PLANS & DETAILS MAY BE SUBJECT TO VARIATIONS. AREAS ARE APPROXIMATE ONLY.

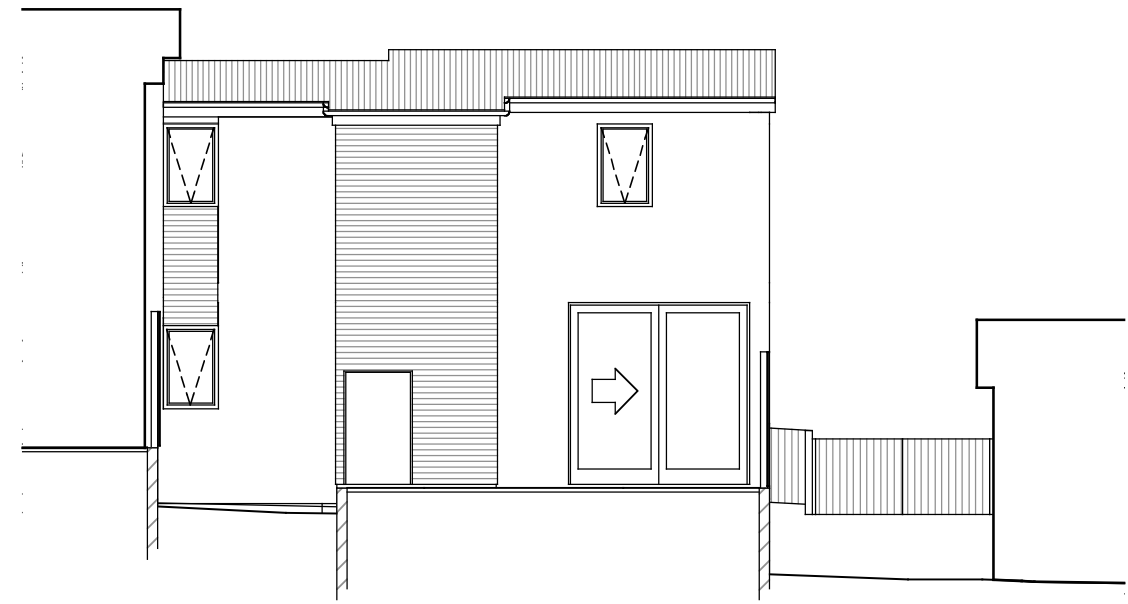
SCALE



PROJECT HOUSING DEVELOPMENT 301 MURRAY STREET - HOBART		DRAWING TITLE HOUSE TITLES SETOUT HOUSE 11 - T PLANS		
82 Warwick Street Hobart GPO Box 725 Hobart 7001 Australia T 03 6231 9093 F 03 6231 9094 email jim@morrisarchitects.com.au		DATE AUG 2006	SCALE AS SHOWN	DWG NO. 0406-L11TP
morris & breytenbach architects P/L		REV. DATE PRINTED: 28/9/06		

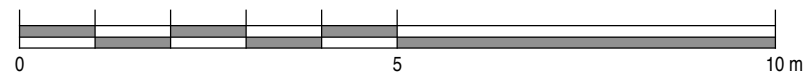



VIRIDIAN - HOUSE 11
NORTH WEST ELEVATION (ENTRANCE)



VIRIDIAN - HOUSE 11
SOUTH EAST ELEVATION

SCALE



PROJECT HOUSING DEVELOPMENT 301 MURRAY STREET - HOBART		DRAWING TITLE HOUSE TITLES SETOUT HOUSE 11 ELEVATIONS			
82 Warwick Street Hobart GPO Box 725 Hobart 7001 Australia T 03 6231 9593 F 03 6231 9594 email info@mjb-architects.com.au	 morrison & breytenbach architects P/L	DATE AUG 2006	SCALE AS SHOWN	DWG NO. 0406-L11E	REV.
		DATE PRINTED: 18/8/06			