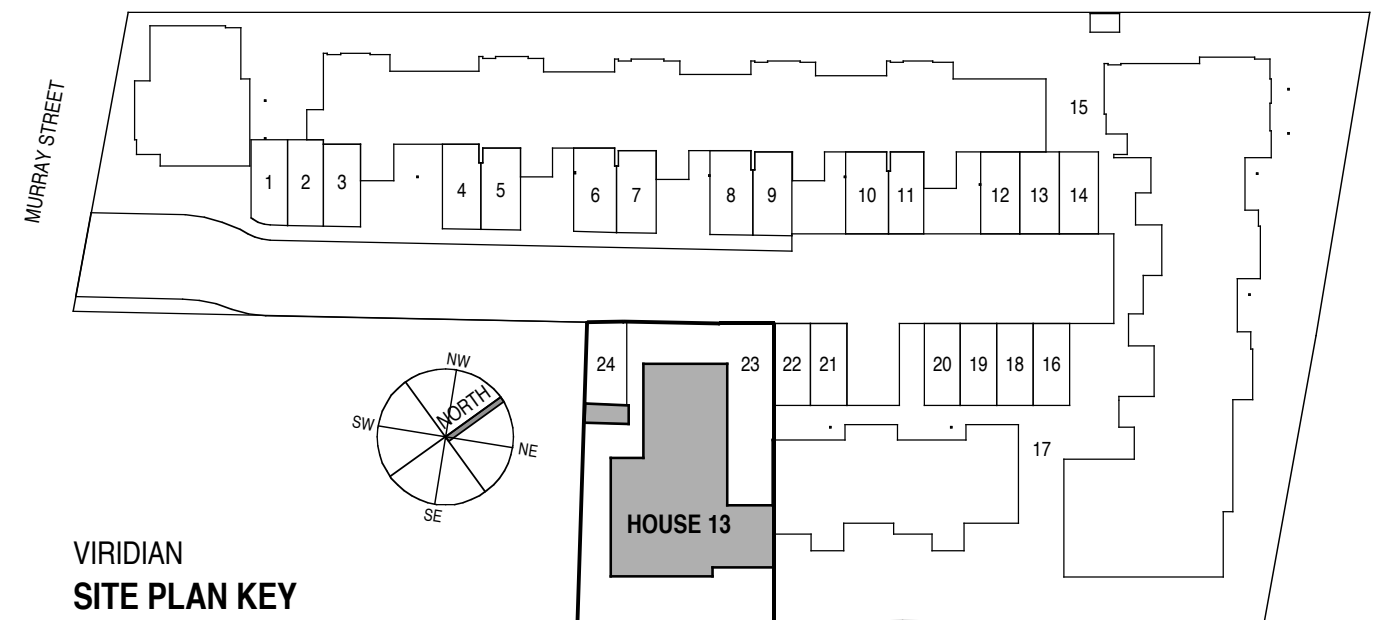
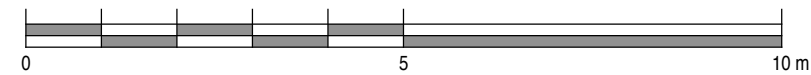


VIRIDIAN  
**HOUSE 13**  
 TYPE 08

AREAS			
BEDROOMS:	3	INTERNAL:	94.8 m <sup>2</sup>
BATHROOMS:	2	TERRACES:	16.0 m <sup>2</sup>
PARKING SPACES:	2		
CARPARK No's:	23 & 24	EXT. STORE:	2.8 m <sup>2</sup>
		LAND AREA:	250.5 m <sup>2</sup>

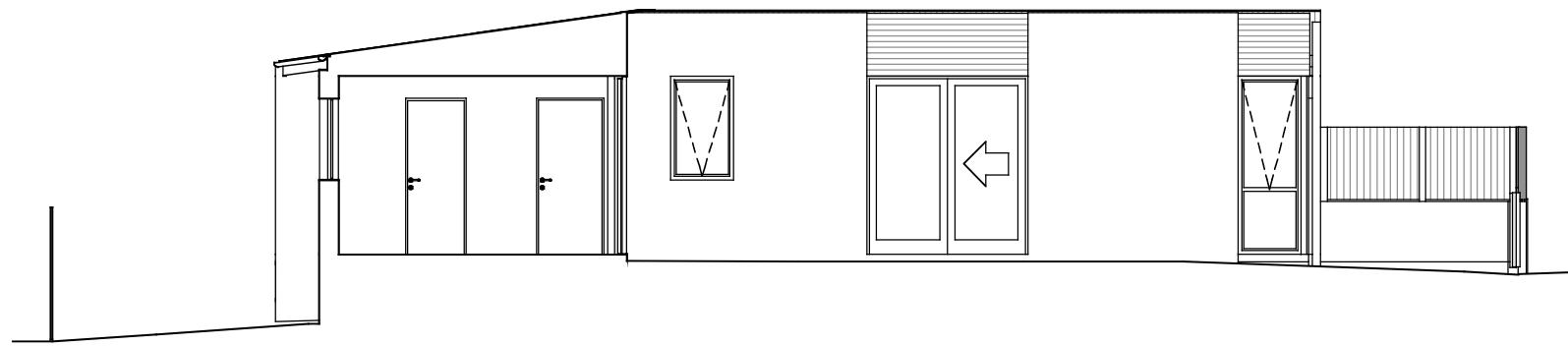
NOTE:  
 PLANS & DETAILS MAY BE SUBJECT TO VARIATIONS. AREAS ARE APPROXIMATE ONLY.

SCALE

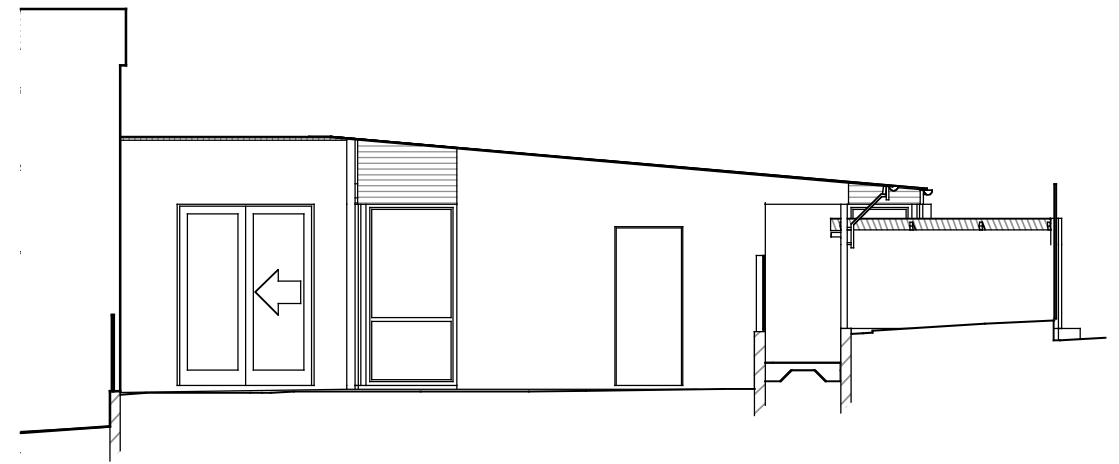


VIRIDIAN - HOUSE 13.  
**GROUND FLOOR PLAN**

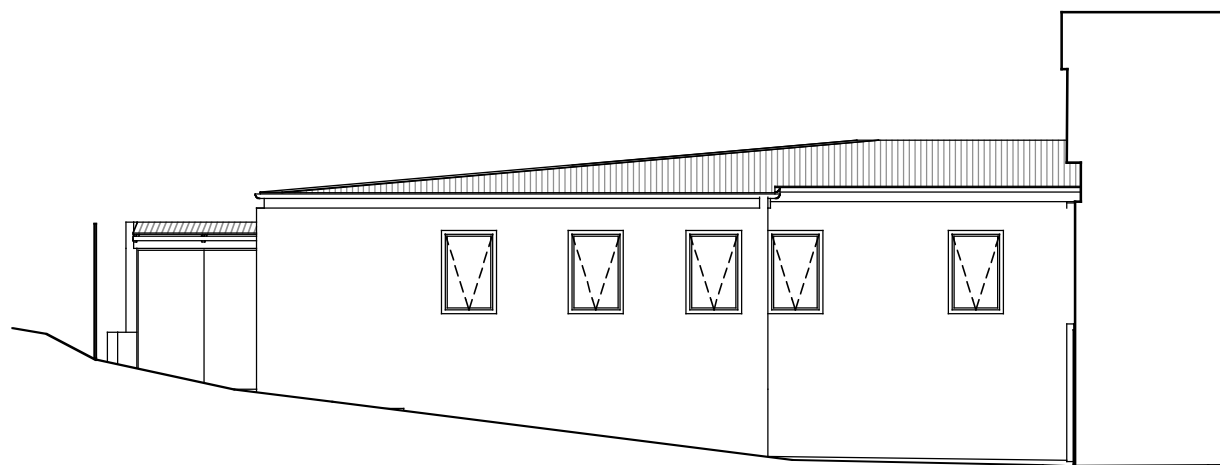
PROJECT	<b>HOUSING DEVELOPMENT</b> 301 MURRAY STREET - HOBART			DRAWING TITLE	<b>HOUSE TITLES SETOUT</b> HOUSE 13 PLANS		
DATE	SCALE	DWG NO.	REV.	DATE	SCALE	DWG NO.	REV.
AUG 2006	AS SHOWN	0406-L13P		18/8/06			
<small>82 Warwick Street Hobart          GPO Box 725 Hobart 7001 Australia          T 03 6231 9593 F 03 6231 9594          email jim@mbarchitects.com.au</small>				<b>morrison &amp; breitenbach architects</b> P/L			



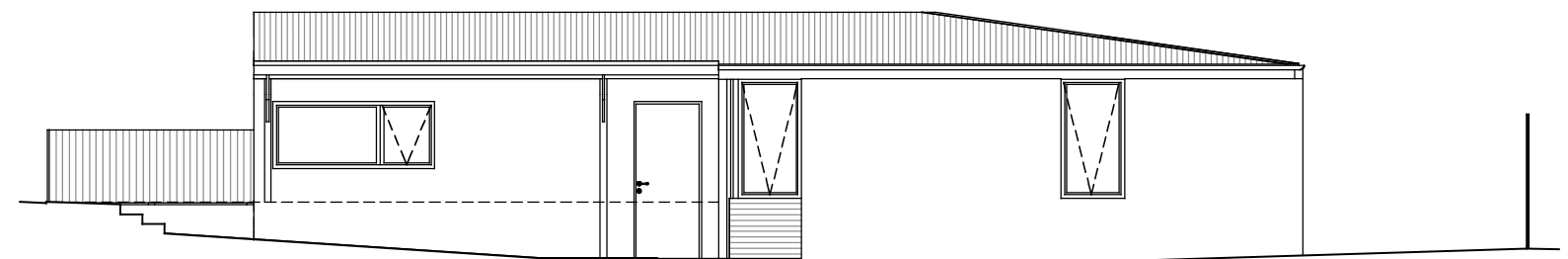
VIRIDIAN - HOUSE 13  
NORTH EAST ELEVATION



VIRIDIAN - HOUSE 13  
NORTH WEST ELEVATION

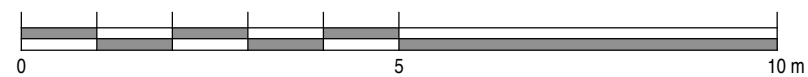



VIRIDIAN - HOUSE 13  
SOUTH EAST ELEVATION



VIRIDIAN - HOUSE 13  
SOUTH WEST ELEVATION (ENTRANCE)

SCALE



PROJECT	<b>HOUSING DEVELOPMENT</b>			DRAWING TITLE	<b>HOUSE TITLES SETOUT</b>		
	301 MURRAY STREET - HOBART				HOUSE 13 ELEVATIONS		
82 Warwick Street Hobart	 <b>morrison &amp; breytenbach architects P/L</b>			DATE	SCALE	DWG NO.	REV.
GPO Box 725 Hobart 7001 Australia				AUG 2006	AS SHOWN	<b>0406-L13E</b>	
T 03 6231 8593 F 03 6231 8594				DATE PRINTED: 18/8/06			
email <a href="mailto:mjb@mjb-architects.com.au">mjb@mjb-architects.com.au</a>							